

The Nationals WA suggestion
to the
2023 Electoral Boundary Review

"Keeping Regional Voices"

THE NATIONALS
for Regional WA

“Keeping Regional Voices”

The Nationals WA suggestion to the 2023 Electoral Boundary Review.

April 2023

The Nationals WA

Ph: 1300 628 792 E: statedirector@nationalswa.com

1 Graylands Road, Claremont WA 6010

Table of Contents

Table of Contents	2
Executive Summary	3
Introduction	3
The Landscape	3
Recommendations	5
Glossary	6
Proposed Electoral Boundaries for 2025 State Election	7
Metropolitan Districts.....	7
Regional Districts.....	7
Albany.....	7
Bunbury	7
Central Wheatbelt.....	8
Collie-Preston	8
Davesville.....	8
Geraldton	8
Kalgoorlie.....	9
Kimberley.....	9
Mandurah	9
Moore.....	9
Murray-Wellington	9
North West Central.....	10
Pilbara	10
Roe.....	10
Vasse.....	10
Warren-Blackwood.....	10
Conclusion.....	11
Appendices	12
Appendix A – Proposed boundaries data.....	12
Appendix B - Maps.....	13

Executive Summary

Introduction

The Nationals WA are pleased to present Electoral Distribution Commissioners with the following recommendations for the Electoral Boundary Review 2023.

Through this suggestion document, we will demonstrate that while changes to the Legislative Council may have diminished the voice of regional communities in the State’s parliament, a similar centralisation of power is not tenable in the Legislative Assembly.

As is so often highlighted by the disparate outcomes experienced West Australians based on where they live, access to government in all its forms is not experienced equally by all West Australians. While The Nationals WA holds a position contrary to current electoral legislative framework, we understand the reality Commissioners are forced to operate within. As such, this suggestion is one of maintenance, not of reform.

Commissioners undertake a great responsibility through this review of electoral boundaries as the fate of many regional communities – and keenly, their access to parliamentary representation – is in their hands.

We contend that each of the sixteen regional electorates currently in place should maintain their place in the electoral landscape, with only minor adjustments required to ensure equitable representation for all West Australians.

The Landscape

As is the case before each redistribution, population growth and movements since the last has created a situation where redistributions are required to ensure equitable representation for all West Australians.

The *Process Overview* document on the 13 March 2023, identified the following districts as being outside permissible VFADE and thus requiring attention:

District	Number enrolled electors	VFADE	Legislative Council Region
Armadale	34,151	12.22%	East Metropolitan
Baldivis	35,906	17.99%	South Metropolitan
Butler	36,484	19.89%	North Metropolitan
Jandakot	34,756	14.21%	South Metropolitan
Mandurah	33,736	10.86%	South West
Midland	33,629	10.51%	East Metropolitan
Moore	26,976	(-11.36%)	Agricultural
North West Central	23,296	(-23.45%)	Mining and Pastoral
Perth	33,489	10.05%	North Metropolitan
West Swan	35,412	16.37%	North Metropolitan

The following districts are close to reaching maximum or minimum VFADE:

District	Number enrolled electors	VFADE	Legislative Council Region
Dawesville	33,362	9.63%	South West
Vasse	33,254	9.27%	South West
Darling Range	33,161	8.97%	East Metropolitan
Wanneroo	33,152	8.94%	North Metropolitan
Kimberley	24,546 with LDA	(-19.34%)	Mining and Pastoral

This data forms the basis for this submission. For the purposes of the 2023 boundary review, the ADE is calculated to be 30,341. In 2019 the ADE was 27,573. The average district enrolment for the metropolitan area is 3.9% and the average VFADE for country areas is (-3.14%). Both of these figures are well within the allowable +/-10% limit.

As with previous submissions, The Nationals WA suggestion focuses on districts outside the Perth Metropolitan Boundary and propose a minimal change model.

The Nationals WA reiterate our position that the Electoral Distribution Commissioners adhere to section 16I of the Electoral Act 1907, which states that when dividing the State, Commissioners shall give due consideration to —

- a) community of interest; and
- b) land use patterns; and
- c) means of communication, means of travel and distance from the capital; and
- d) physical features; and
- e) existing boundaries of districts; and
- f) existing local government boundaries; and
- g) the trend of demographic changes.

Recent changes to the Electoral Act 1907 have seen the removal of specific reference to the Perth Metropolitan Boundary and of electoral regions writ large, which have been key to the makeup of the Legislative Council since the late 1980s. It is important to note these regions have developed their own communities of interest over time, share similar geographical features and land use patterns and experience similar levels of isolation from the capital.

As outlined in our 2019 boundary submission, the sheer size of some large districts, particularly in the north of the State, continue to make access to local representation extremely difficult for constituents who can find themselves over 2000km from their local parliamentarian’s office.

It is our firm view that adoption of a so-called “one vote, one value” electoral system cannot deliver fair or equitable parliamentary representation for all in a state like WA. The need for representatives to be drawn from communities they understand and are accountable to is fundamental to representative democracy and Commissioners must bear in mind their responsibility to uphold the democratic values West Australians expect.

The Nationals WA propose all regional districts should be retained, and we submit that the existing Perth Metropolitan Boundary should be maintained.

Significant redrawing of boundaries within the Metropolitan Region should be considered to address the Reorientation of seats along growth corridors will go some way to prevent radical boundary changes in the future.

Demographic growth trends are strong for regional WA, with significant population growth between 2011 and 2021 in many areas, including the: Mid West; Pilbara; South West; and Avon Valley.

Recommendations

The Nationals WA makes the following recommendations:

1. The Shire of East Pilbara is divided either from 123.33E meridian or north of the Kidson Track / Wapet Road and east of Lake Auld. Lands and electors from this part of the world are transferred to the district of Kimberley.
2. The Shire of Northampton is completely transferred to the district of North West Central from the district of Moore.
3. Additionally, the Shire of Chapman Valley, Shire of Leonora and locality of Ularring from the Shire of Menzies are transferred to the district of North West Central.
4. The Shire of Yalgoo, Shire of Koorda, and Shire of Wyalkatchem are transferred to the district of Moore.
5. The localities of Dwellingup, Solus, Banksiadale, Holyoake, Myara, Whittaker, Teesdale, and Marrinup from the Shire of Murray; locality of Nanga Brook from the Shire of Waroona; localities Hoffman and Mornington from the Shire of Harvey; and locality of Yourdamung Lake from the Shire of Collie are transferred to the district of Central Wheatbelt.
6. The Shire of Augusta-Margaret River, except for the localities of Cowaramup and Gracetown, is transferred to the district of Warren-Blackwood.
7. The Shire of Capel is transferred to the district of Collie-Preston.
8. The localities of Kirup, Brookhampton, Wilga West, Brazier, and Newlands are transferred to the district of Warren-Blackwood.
9. The localities of Eaton and Millbridge, along with part of the locality of Australind, are transferred to the district of Bunbury.
10. Boundary changes between the districts of Dawesville, Mandurah and Murray-Wellington are amended to share voters from the City of Mandurah.
11. That a reorientation of metropolitan districts would be beneficial to align districts around the known greenfield growth regions of Ellenbrook, Alkimos, Baldivis, Singleton and Byford.
12. Where possible, Commissioners should move to reduce the number of districts within local governments as put under previous submissions by the City of Swan.

See [Appendix A](#) for enrolment statistics of proposed boundaries.

Glossary

The following terms are used in this document:

Term	Explanation
Large District Allowance (LDA)	The added elector allowance for districts greater than 100,000km ² . This is calculated by multiplying the area of the district by 1.5%, as per the relevant legislation.
Average District Enrolment (ADE)	The total number of enrolled electors, divided by the number of Legislative Assembly districts.
Variation from Average District Enrolment (VFADE)	The variation from ADE, unique to each district. For districts with LDA, the district can be 20% below the ADE or 10% above ADE. For districts without LDA, the district is allowed to be 10% above or below the ADE.
Electoral District	Also appears as <i>District</i> . The geographic areas drawn to elect representatives to the Legislative Assembly.
Local Government Area (LGA)	The geographical area prescribed to a Shire, City, or Municipal Council.

Proposed Electoral Boundaries for 2025 State Election

Metropolitan Districts

The metropolitan region average VFADE is 3.9%, meaning there is existing capacity across all districts to accommodate the changes in population.

The Nationals WA note that population growth has been in line with Australian Bureau of Statistics predictions and that most of the population growth has been in green fields regions of Alkimos / Two Rocks, Ellenbrook, Byford and Baldivis.

Districts such as Butler and Wanneroo could be realigned from being North/South to being East/West. This would be a better way of factoring in growing areas in the City of Wanneroo.

A complete redraw of West Swan, Swan Hills, Midland, Forrestfield and could recentre districts on Malaga, Ellenbrook, Mundaring and Maida Vale, respectively. This may also achieve a request at the last distribution by the City of Swan to be split across fewer districts and will cater for growth in Ellenbrook.

Kalamunda moving south will in turn gain excess voters from Darling Range and Armadale, freeing up Darling Range to absorb voters from Jandakot and Baldivis.

These sensible proposals will mean that recentred metropolitan districts are centred on areas of growth and lead to minimal changes under future redistributions.

Regional Districts

Albany

No change.

We note Albany was the fastest growing region with 4,000 new electors and remains within the City of Albany local government area. The Shire of Jerramungup was removed from this district in the most recent distribution.

Proposed VFADE: -6.22%

Bunbury

Gains the localities of Eaton and Millbridge from Collie-Preston and may gain part of Australind from Murray-Wellington.

Cedes the localities of Dalyellup and Stratham to Collie-Preston.

These changes move Bunbury north and include established localities with clear road links to the Bunbury Central Business District.

Proposed VFADE: 8.9%

Central Wheatbelt

Gains the localities of Dwellingup, Solus, Banksiadale, Holyoake, Myara, Whittaker, Teesdale, Hoffman, Mornington and Yourdamung Lake.

Loses the Shires of Koorda and Wyalkatchem to Moore.

The localities identified follow the Darling Scarp down the Swan Coastal Plain. Dwellingup and the Dwellingup State Forest fall within the Peel region, which includes Boddington and the Hotham Valley.

While the inclusion of these localities does divide the Shires of Murray, Waroona, Harvey and Collie, the localities chosen to move into Central Wheatbelt border state forest and are primarily agricultural in land use.

We note that the Shire of York is the fastest growing region outside the Perth Metropolitan Boundary.

Proposed VFADE: -7.67% (with large district allowance)

Collie-Preston

Gains the localities of Dalyellup and Stratham from Bunbury.

Cedes the localities of Eaton and Millbridge to Bunbury and the localities of Kirup, Brookhampton, Wilga West, Brazier, and Newlands to Warren-Blackwood. Also cedes the locality of Yourdamung Lake to Central Wheatbelt.

The Shire of Capel is almost entirely placed within one district.

Given that this district marries recreational areas, farming and dense suburbia, the district could be renamed to Ferguson or Ferguson Valley.

Proposed VFADE: 8.33%

Dawesville

Reorientation of the district to fit within the allowable limit. A solution could be to cede part of the locality of Dudley Park to the north or south of Old Coast Road to Mandurah or cede part of the locality of Dawesville to the west or east of the Old Coast Road to Murray-Wellington.

A name change may be required depending on whether the locality of Dawesville remains in the district or not. Potential names could be Falcon, Halls Head or Wannanup.

Proposed VFADE: 8.65%

Geraldton

No change.

Proposed VFADE: -8.35%

Kalgoorlie

Cedes the Shire of Leonora and the locality of Ularring in the Shire of Menzies to North West Central.

This section of the Shire of Menzies connects with Wiluna via the Goldfields Highway. Given the remote isolation of this area, such a connection is both valuable and lends these communities to share representation.

Proposed VFADE: -10.25% (with large district allowance)

Kimberley

Gains part of the Shire of East Pilbara east of longitude 123.33 but within the boundaries of East Pilbara from Pilbara or land to the north of the Kidson Track / Wapet Road and Lake Auld.

The Nationals WA note that recent flooding has revealed there may be many unregistered Western Australians living in the Kimberley region who would not have been captured by census data.

Proposed VFADE: -15.71% (with large district allowance)

Mandurah

Reorientation of the district to fit within the allowable limit. A solution could be to gain part of the locality of Dudley Park to the north or south of Old Coast Road and in turn cede the locality of Coodanup. May also cede the locality of Parklands to Murray-Wellington.

Proposed VFADE: 8.53%

Moore

Gains the Shire of Yalgoo from North West Central and the Shire of Koorda and Shire of Wyalkatchem from Central Wheatbelt.

Loses the Shire of Northampton and Shire of Chapman Valley to North West Central.

We note that the population in the Shire of Chittering grew by 35% between 2011 and 2021, while the Shire of Gingin grew 20% over the same period.

Proposed VFADE: -11.15% (with large district allowance)

Murray-Wellington

Reorientation of the district to fit within the allowable limit and become more coastal. A solution could be to gain part of the locality of Dawesville to the west or east of the Old Coast Road from Dawesville or gain the locality of Coodanup from Mandurah.

May also gain the locality of Parklands from Mandurah.

Cedes the localities of Dwellingup, Solus, Banksiadale, Holyoake, Myara, Whittaker, Teesdale, and Marrinup to Central Wheatbelt.

May cede part of Australind to Bunbury.

Given the former Wellington Land district is now mostly lies in districts outside this district, a name change would be appropriate. Given the geographical location and direction of the district, a potential new name could be Pindjarup or Bindjareb.

Proposed VFADE: 8.4%

North West Central

Gains the remainder of the Shire of Northampton and the Shire of Chapman Valley from Moore; gains the Shire of Leonora and the locality of Ularring in the Shire of Menzies from Kalgoorlie.

Cedes the Shire of Yalgoo to Moore.

We note that the population in the Shire of Chapman Valley grew 35% between 2011 and 2021.

The proposed changes make the district of North West Central sustainable for future distributions by adding population centres while retaining similar land uses.

Proposed VFADE: -13.17% (with large district allowance)

Pilbara

Cedes part of the Shire of East Pilbara east of longitude 123.33 but within the boundaries of East Pilbara or land to the north of the Kidson Track / Wapet Road and Lake Auld to Kimberley.

Major population centres of Newman, Karratha and Port Hedland remain in the district.

Proposed VFADE: -10.85% (with large district allowance)

Roe

Gains the two electors from the Shire of Gnowangerup currently in Warren-Blackwood.

Proposed VFADE: -11.37% (with large district allowance)

Vasse

Cedes the Shire of Augusta-Margaret River to Warren-Blackwood, except for the town of Cowaramup and town of Gracetown.

Cowaramup is a town undergoing major growth with green fields subdivisions and Gracetown has a strong relationship with Cowaramup. The Shire of Augusta-Margaret River grew by 42% between 2011 and 2021 with Cowaramup town alone growing by 30% since 2016.

Proposed VFADE: 7.39%

Warren-Blackwood

Gains the Shire of Augusta-Margaret River except for the town of Cowaramup and town of Gracetown; and the localities of Kirup, Brookhampton, Wilga West, Brazier, and Newlands from Collie-Preston.

Proposed VFADE: 8.1%.

Conclusion

The Nationals WA provide these suggestions as sensible, considered options for the 2023 Electoral Boundary Review. We have pursued a minimal change model, however where appropriate, adjustments to some districts have been suggested in order to maintain democratic equity.

This redistribution submission was undertaken with the express intention of ensuring regional West Australians could maintain what parliamentary representation remained after recent changes to the Legislative Council, thus salvaging some electoral dignity.

This submission clearly demonstrates maintenance of the sixteen regional electorates is both tenable and appropriate.

With a combined VFADE of just (-2.3%) across regional electoral districts, there is ample scope to redraw boundaries to bring all districts within allowable limits and maintain the Perth Metropolitan Boundary.

Having electoral districts straddle this long-standing boundary would not meet the expectations of *Section 161* of the *Electoral Act 1907* and damage the representative power of regional residents within those electoral districts, further impacting regional representation.

There is no need to abolish a district at this redistribution. Ahead of viewing proposals from the public and other political entities, The Nationals WA strongly oppose any proposal that results in the loss of a regional electoral district.

Our submission respects the connectivity of communities of interest and ensures sustainability for regional electorates.

By adopting The Nationals WA proposed electoral boundaries, regional West Australians will maintain their fair share of Legislative Assembly representation without taking away from their metropolitan cousins. Given changes to the legislative Council, where regional West Australians will see a significant drop in representation after the next election, this is a fair and reasonable request. This submission demonstrates how this would best be achieved and we encourage Electoral Boundary Commissioners to consider this proposal with great diligence and concern.

The Nationals WA note that the number of metropolitan districts already provides an advantage to metropolitan constituents whilst regional Members of Parliament have on average been forced to cover larger districts.

The district of Central Wheatbelt, for example, is the size of Portugal. North West Central is the largest district in Western Australia, stretching from Carnarvon through to the Ngaanyatjarra lands – a landmass exceeding that of the State of New South Wales.

The Nationals WA thank the Commissioners for their diligent consideration of this submission and look forward to the proposed draft and final versions later this year.

Appendices

Appendix A – Proposed boundaries data

Enrolment figures for each proposed regional District

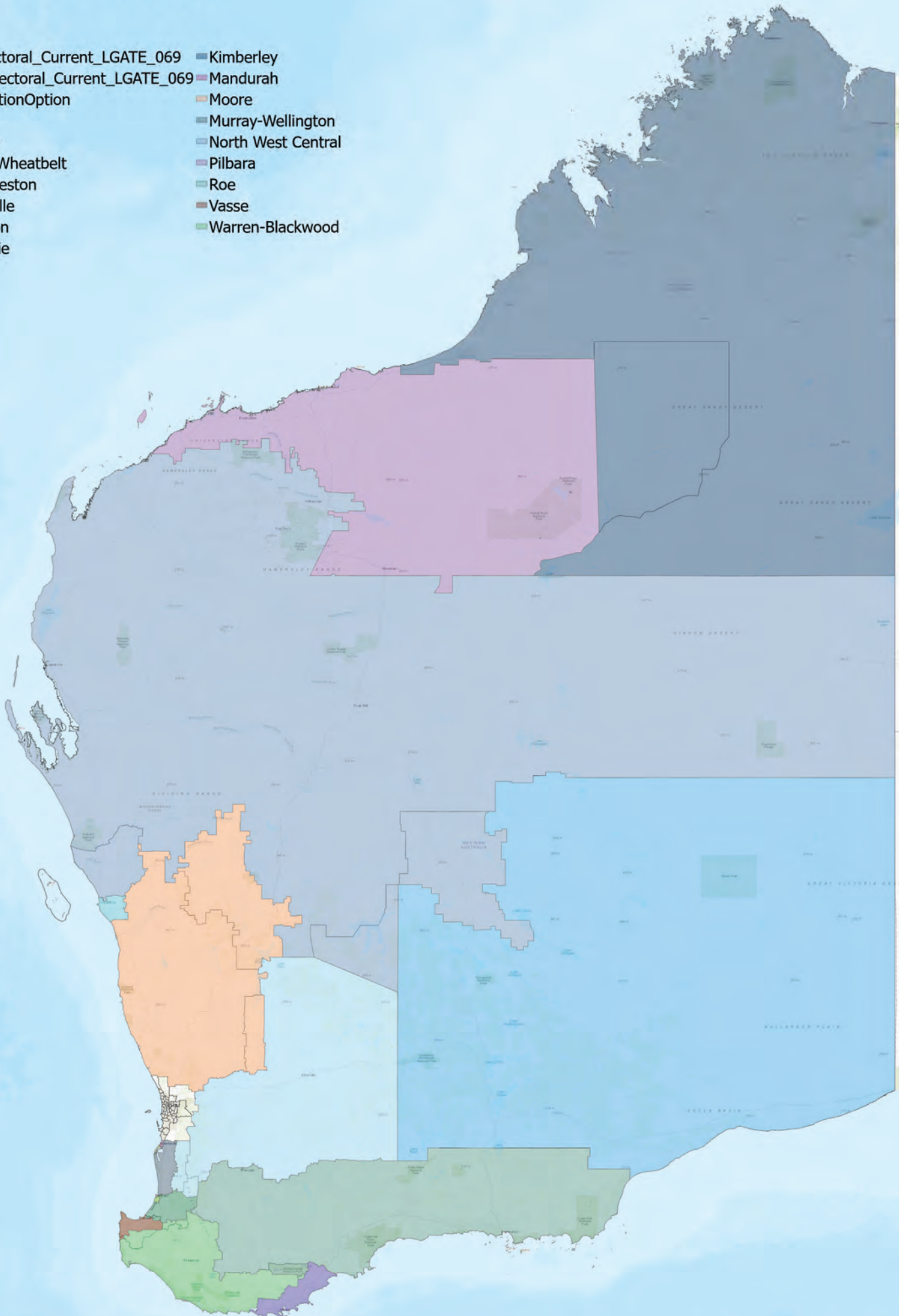
District	Enrolment 13 March 2023	VFADE 2023	Proposed enrolment (Incl. LDA)	Proposed VFADE
Albany	28,540	(-6.22%)	28,540	(-6.22%)
Bunbury	31,873	4.74%	33,149	8.94%
Central Wheatbelt	28,184	(-7.39%)	28,172	(-7.67%)
<i>Electors</i>	<i>26,652</i>		<i>26,666</i>	
<i>LDA</i>	<i>1,532</i>		<i>1506</i>	
Collie-Preston	32,331	6.24%	32,853	8.33%
Dawesville	33,362	9.63%	33,061	8.65%
Geraldton	27,893	(-8.34%)	27,893	(-8.34%)
Kalgoorlie	28,600	(-6.02%)	27,315	(-10.25%)
<i>Electors</i>	<i>20,268</i>		<i>19,860</i>	
<i>LDA</i>	<i>8,332</i>		<i>7455</i>	
Kimberley	24,546	(-19.34%)	25,651	(-15.71%)
<i>Electors</i>	<i>16,514</i>		<i>16,514</i>	
<i>LDA</i>	<i>8,032</i>		<i>9137</i>	
Mandurah	33,736	10.86%	33,025	8.53%
Moore	26,976	(-11.36%)	27,039	(-11.15%)
<i>Electors</i>	<i>-</i>		<i>25,497</i>	
<i>LDA</i>	<i>-</i>		<i>1542</i>	
Murray-Wellington	32,237	5.93%	32,987	8.4%
North West Central	23,296	(-23.45%)	26,425	(-13.17%)
<i>Electors</i>	<i>11,021</i>		<i>13,509</i>	
<i>LDA</i>	<i>12,275</i>		<i>12,916</i>	
Pilbara	28099	(-7.66%)	27132	(-10.85%)
<i>Electors</i>	<i>23,716</i>		<i>23,716</i>	
<i>LDA</i>	<i>4,383</i>		<i>3416</i>	
Roe	26,962	(-11.39%)	26,973	(-11.37%)
<i>Electors</i>	<i>25,387</i>		<i>25,389</i>	
<i>LDA</i>	<i>1,575</i>		<i>1584</i>	
Vasse	33,254	9.27%	32,667	7.39%
Warren- Blackwood	31,822	4.57%	32,895	8.1%
Average	29,482	(-3.1%)	29,739	(-2.3%)

Appendix B - Maps

Please find graphic representations of proposed electoral boundaries in the following pages.

State Overview

- | | |
|-----------------------------------|--------------------|
| State_Electoral_Current_LGATE_069 | Kimberley |
| State_Electoral_Current_LGATE_069 | Mandurah |
| RedistributionOption | Moore |
| Albany | Murray-Wellington |
| Bunbury | North West Central |
| Central Wheatbelt | Pilbara |
| Collie-Preston | Roe |
| Dawesville | Vasse |
| Geraldton | Warren-Blackwood |
| Kalgoorlie | |



Geraldton

State_Electoral_Current_LGATE_069

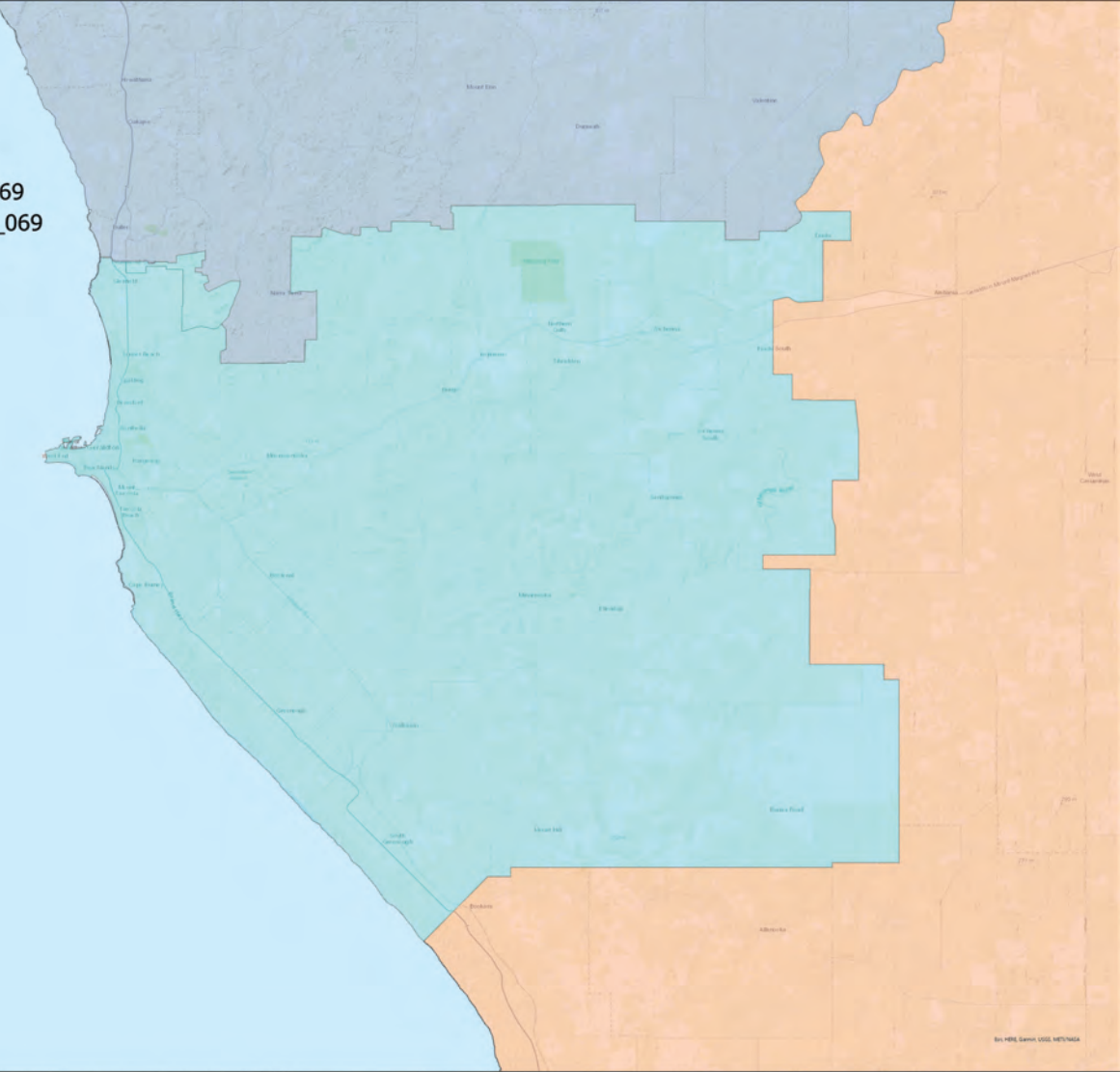
State_Electoral_Current_LGATE_069

RedistributionOption

Geraldton

Moore

North West Central



Albany

State_Electoral_Current_LGATE_069

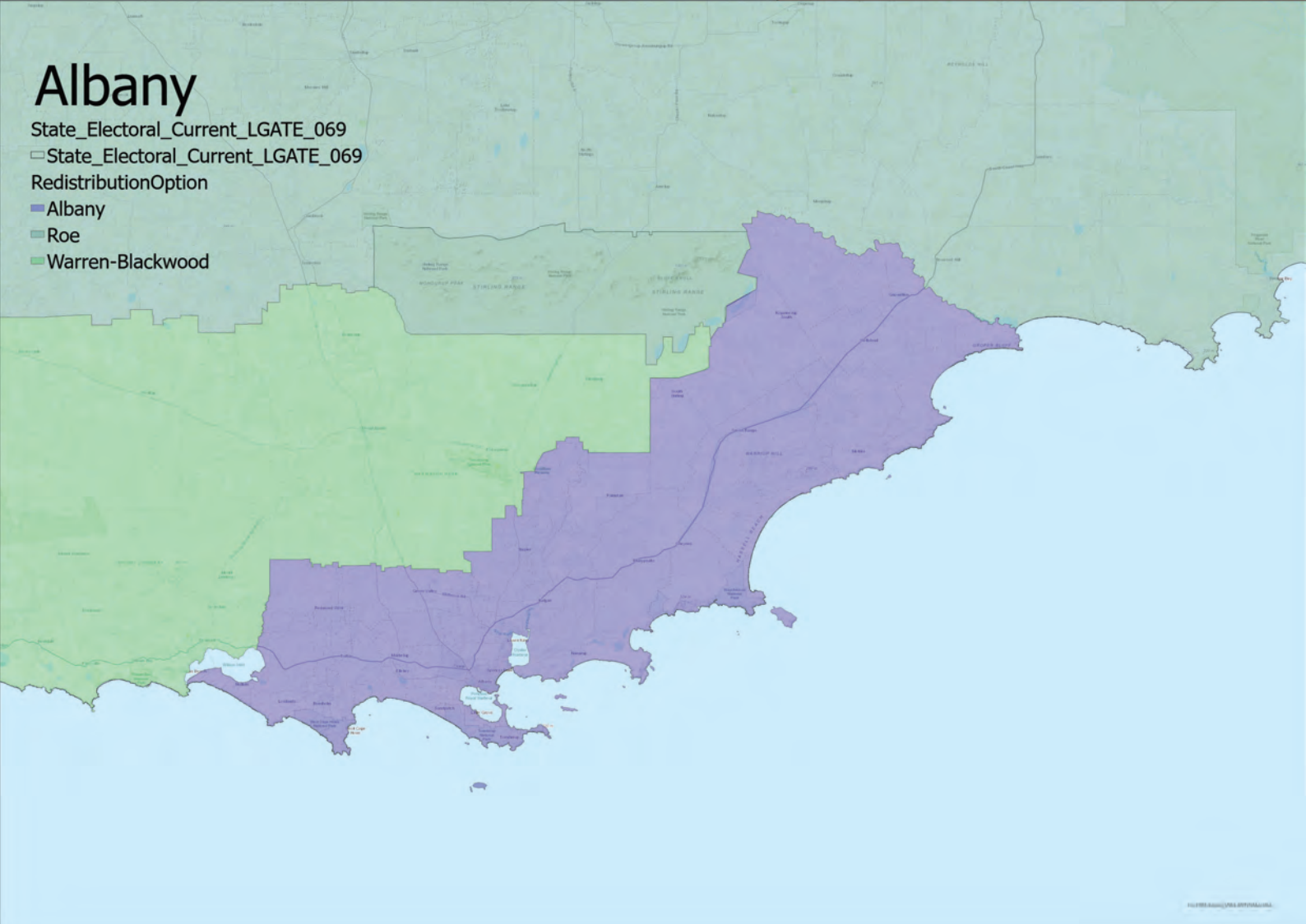
State_Electoral_Current_LGATE_069

RedistributionOption

Albany

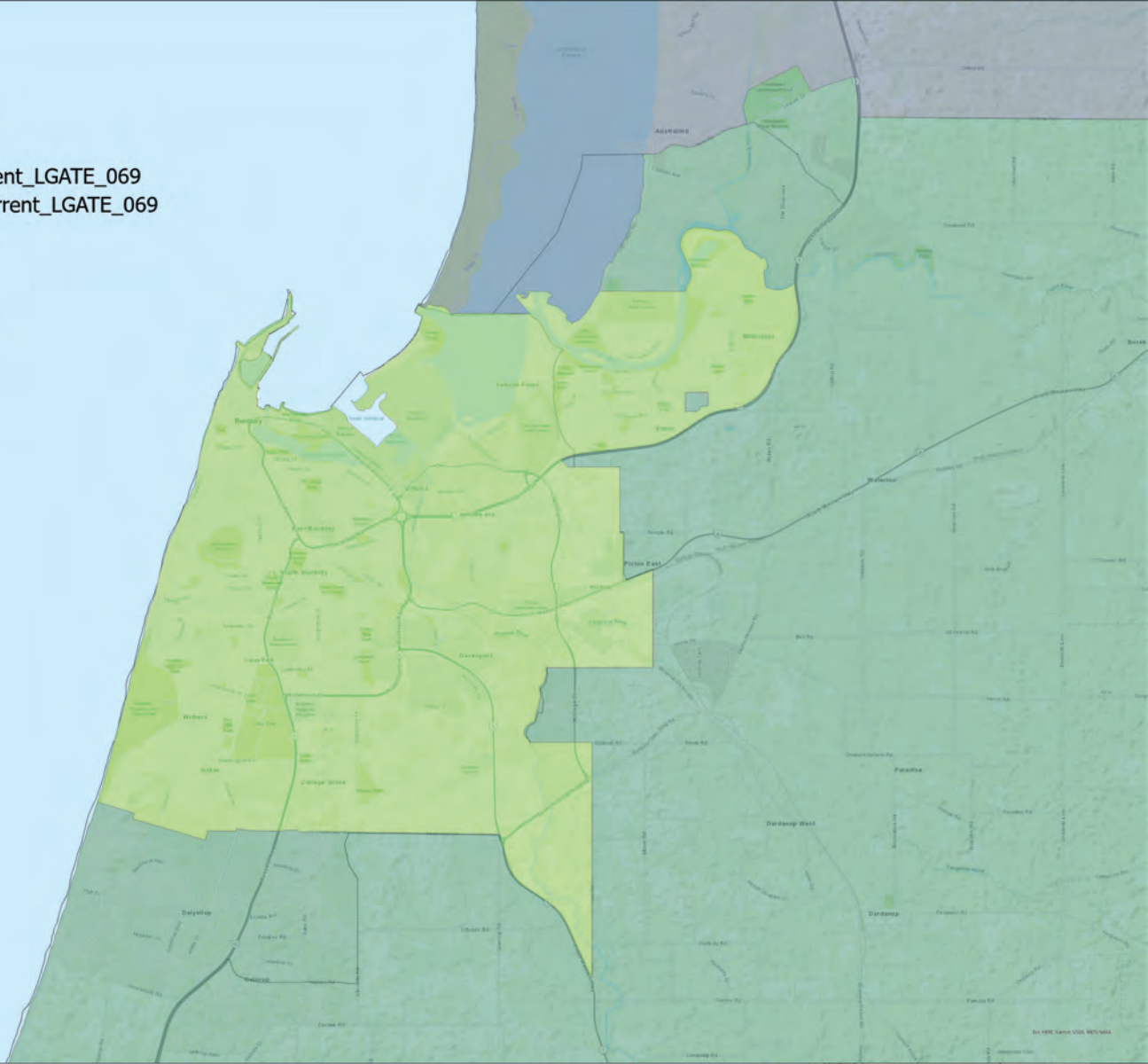
Roe

Warren-Blackwood



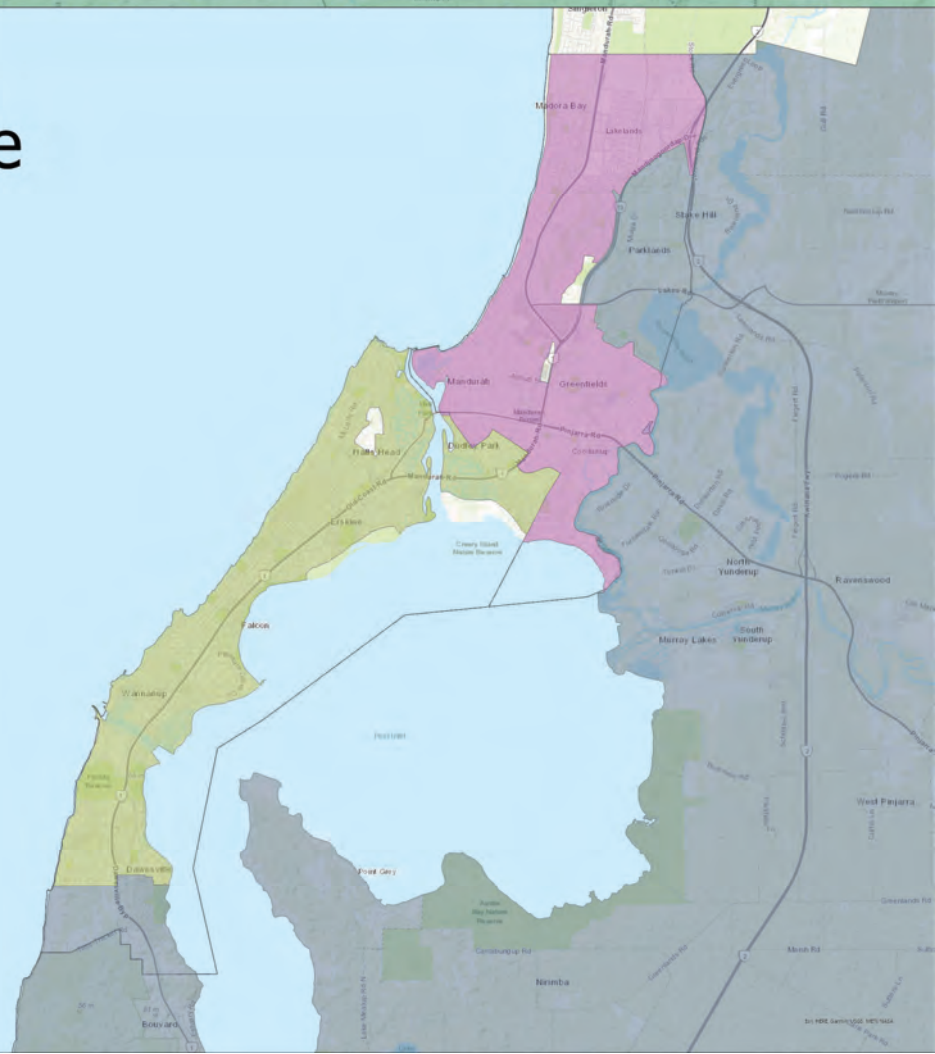
Bunbury

- State_Electoral_Current_LGATE_069
- State_Electoral_Current_LGATE_069
- RedistributionOption
- Bunbury
- Collie-Preston
- Murray-Wellington



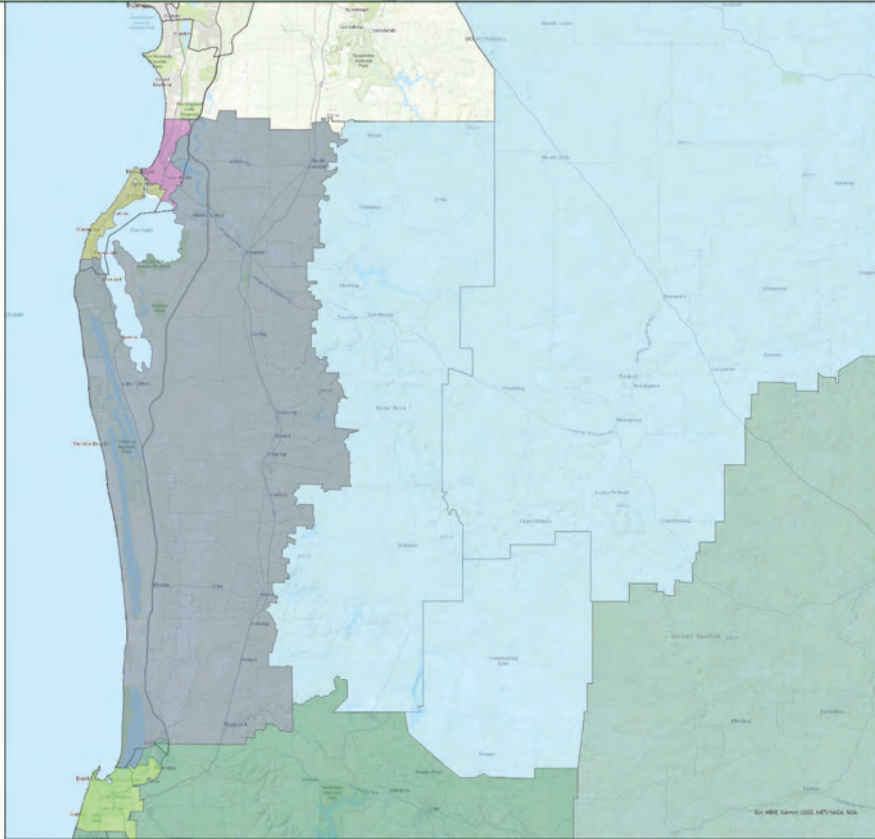
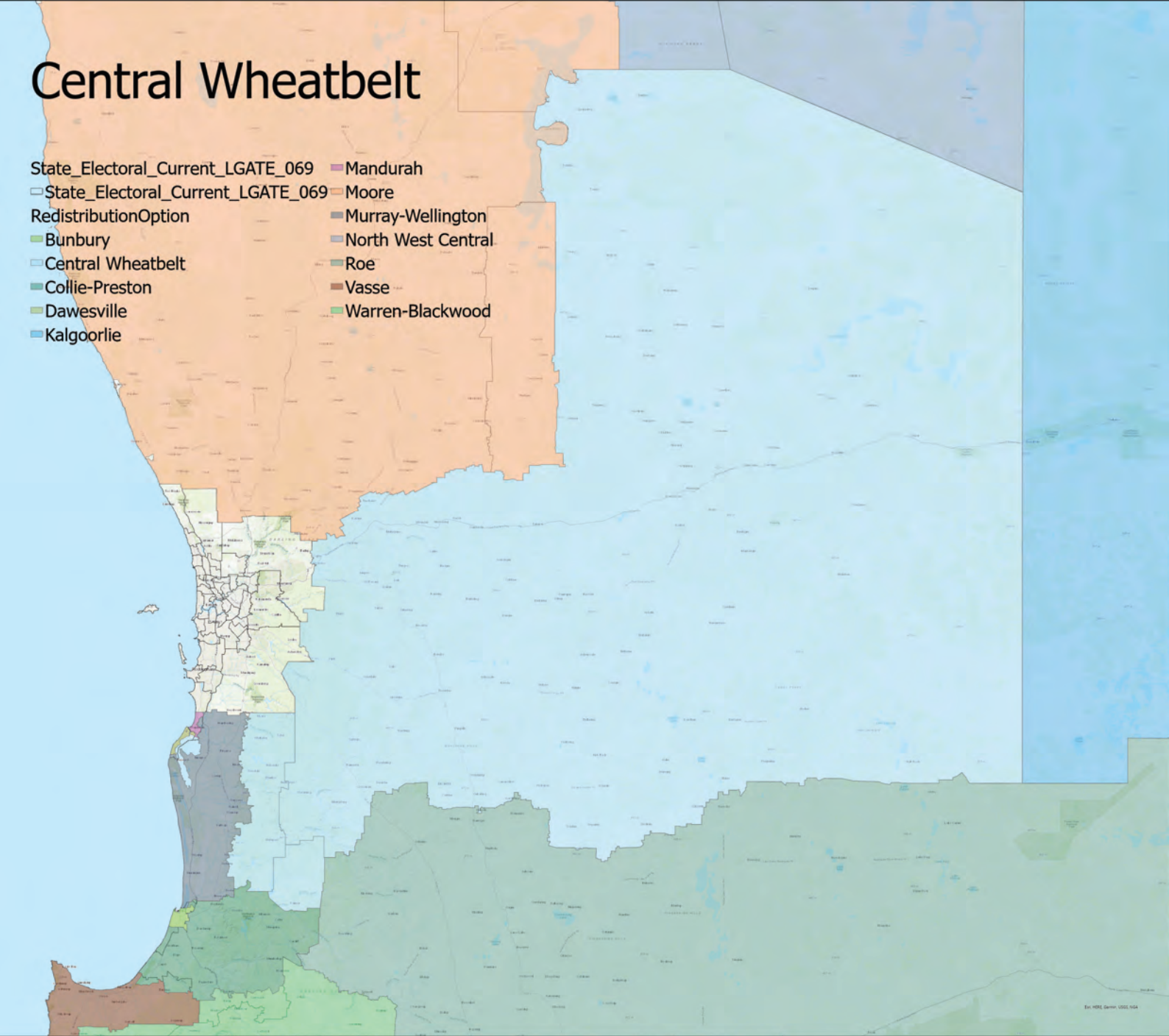
Mandurah / Dawsville

- State_Electoral_Current_LGATE_069
- State_Electoral_Current_LGATE_069
- RedistributionOption
- Dawesville
- Mandurah
- Murray-Wellington



Central Wheatbelt

- State_Electoral_Current_LGATE_069
- State_Electoral_Current_LGATE_069
- RedistributionOption
- Bunbury
- Central Wheatbelt
- Collie-Preston
- Dawesville
- Kalgoorlie
- Mandurah
- Moore
- Murray-Wellington
- North West Central
- Roe
- Vasse
- Warren-Blackwood



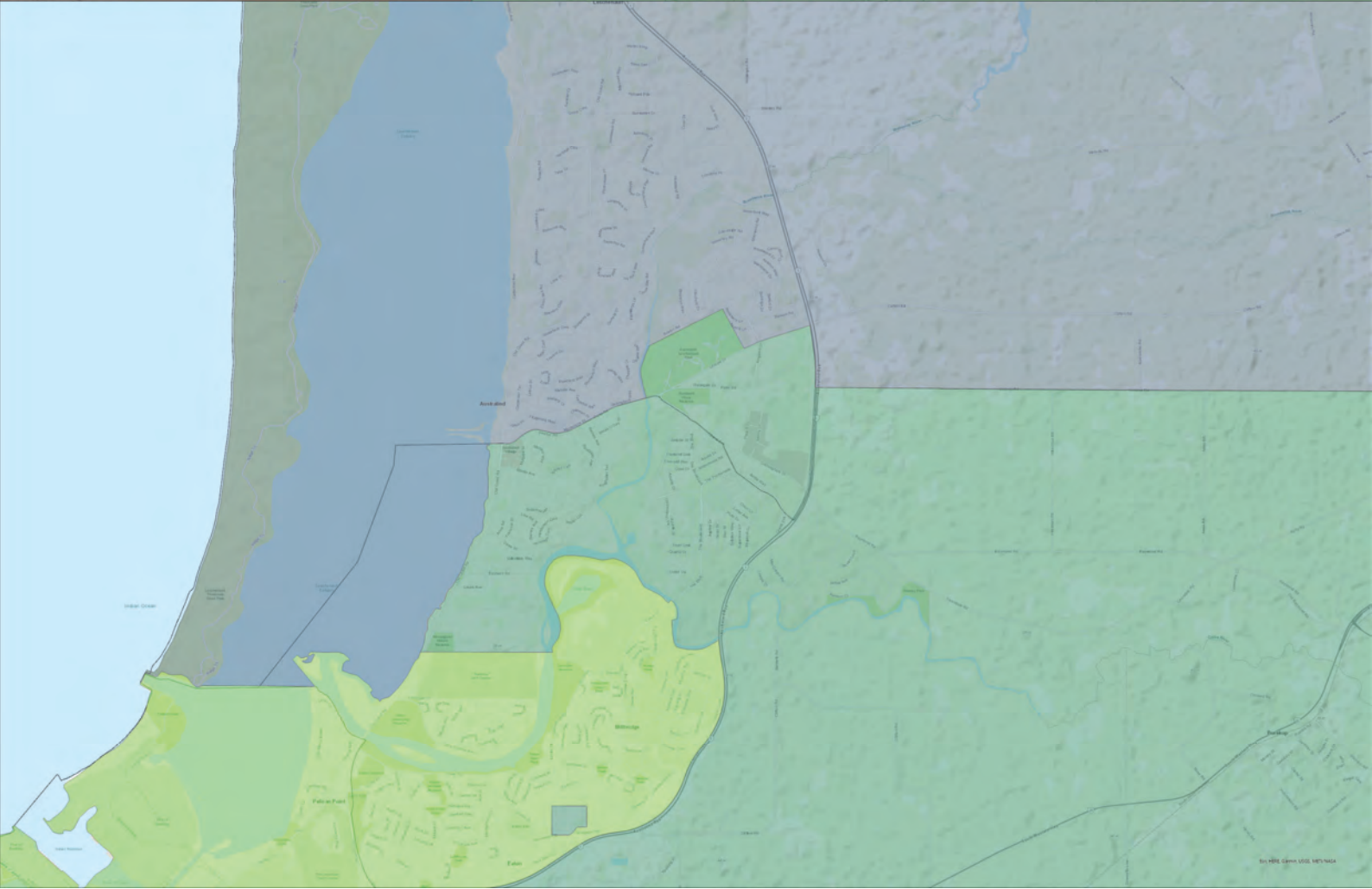
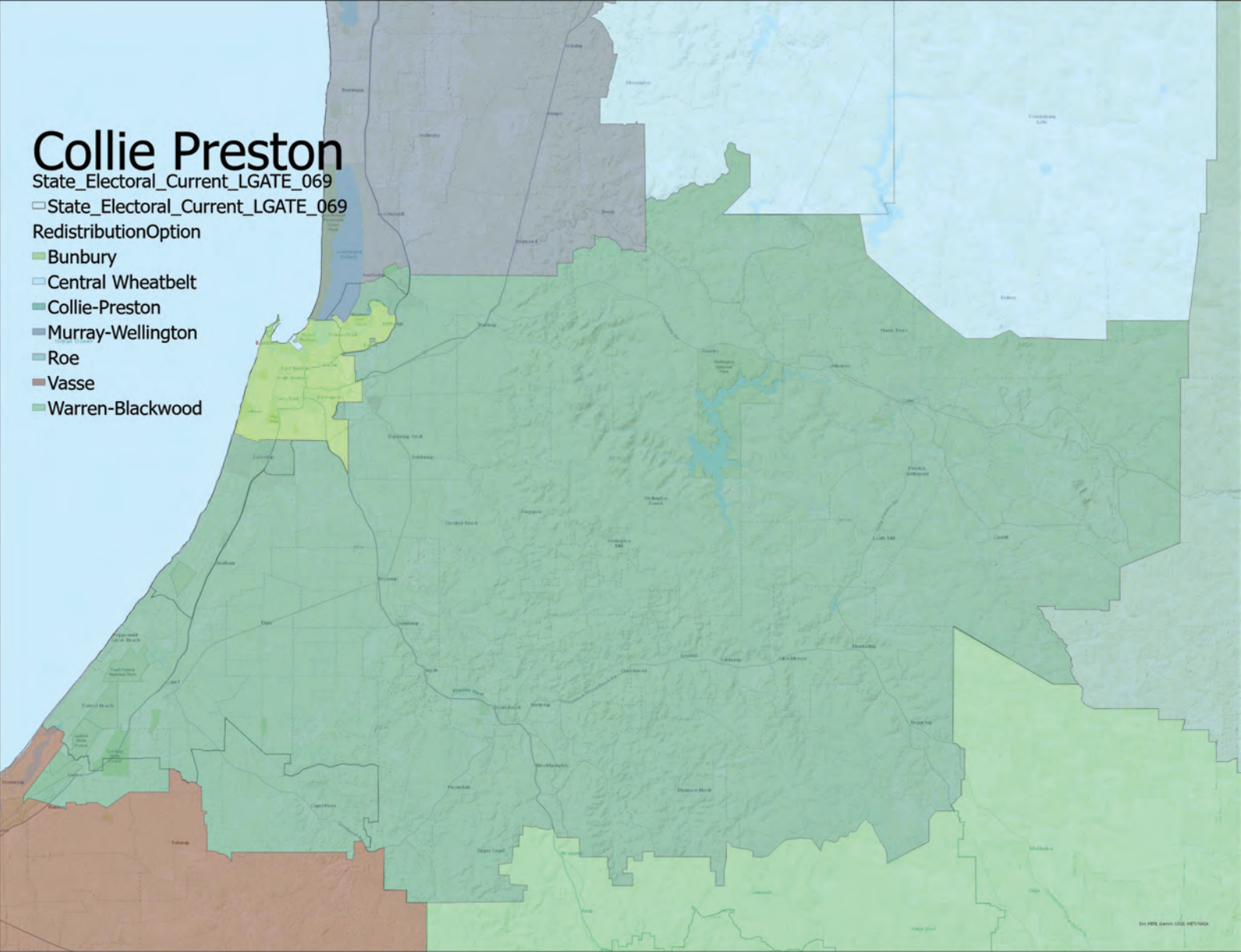
Collie Preston

State_Electoral_Current_LGATE_069

State_Electoral_Current_LGATE_069

RedistributionOption

- Bunbury
- Central Wheatbelt
- Collie-Preston
- Murray-Wellington
- Roe
- Vasse
- Warren-Blackwood



Kalgoorlie

State_Electoral_Current_LGATE_069

State_Electoral_Current_LGATE_069

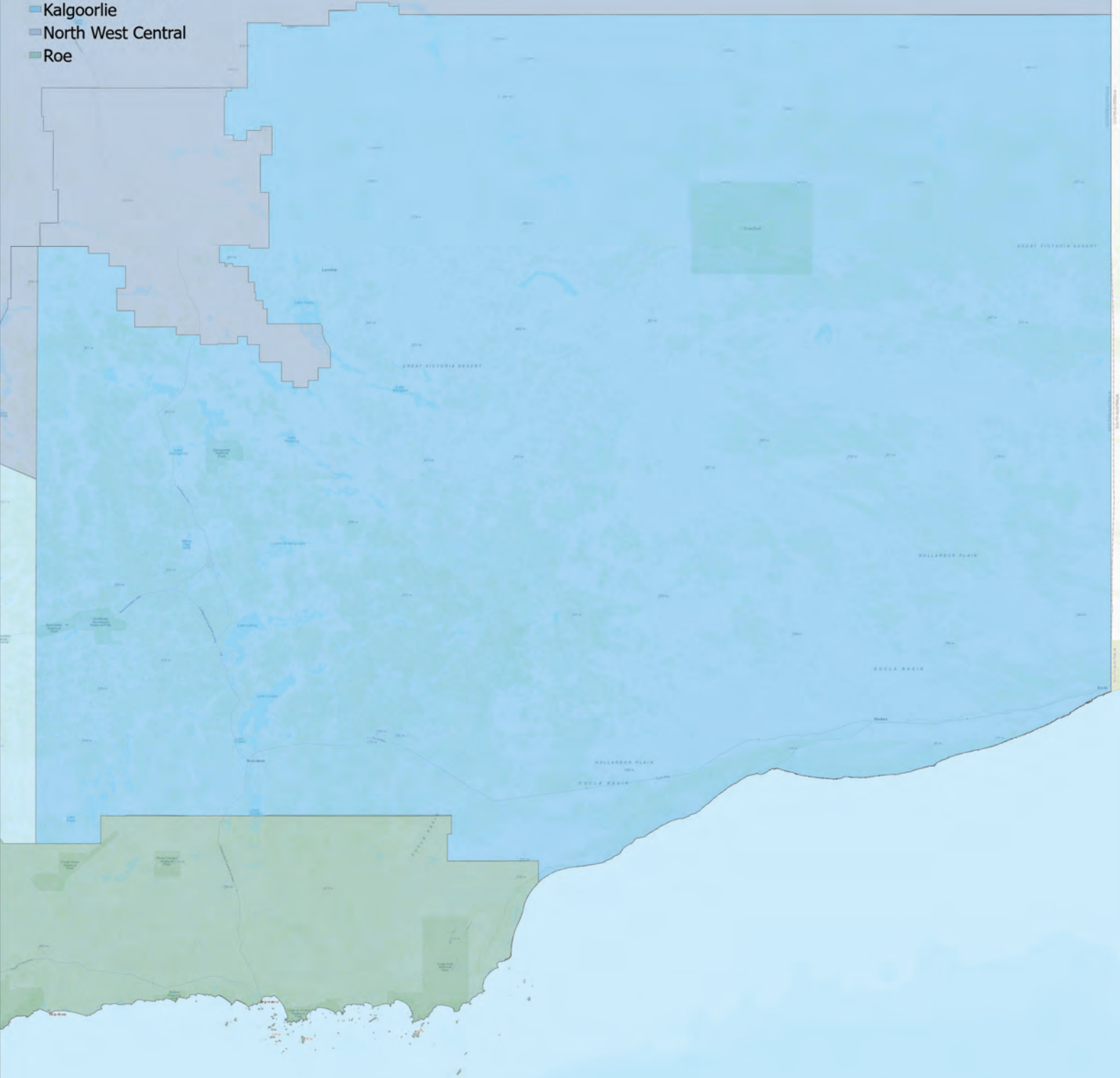
RedistributionOption

Central Wheatbelt

Kalgoorlie

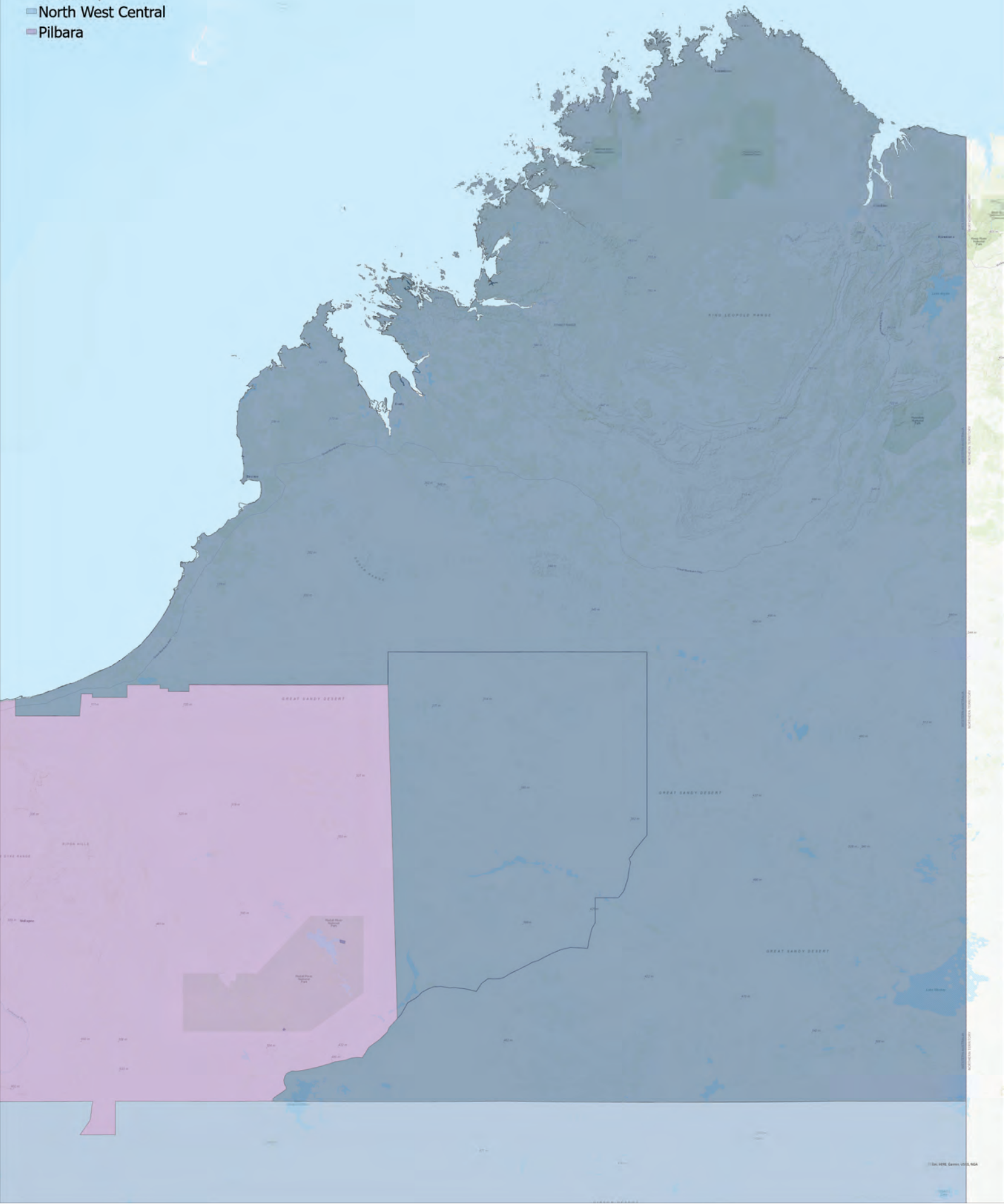
North West Central

Roe



Kimberley

- State_Electoral_Current_LGATE_069
- State_Electoral_Current_LGATE_069
- RedistributionOption
- Kimberley
 - North West Central
 - Pilbara



Moore

State_Electoral_Current_LGATE_069

□ State_Electoral_Current_LGATE_069

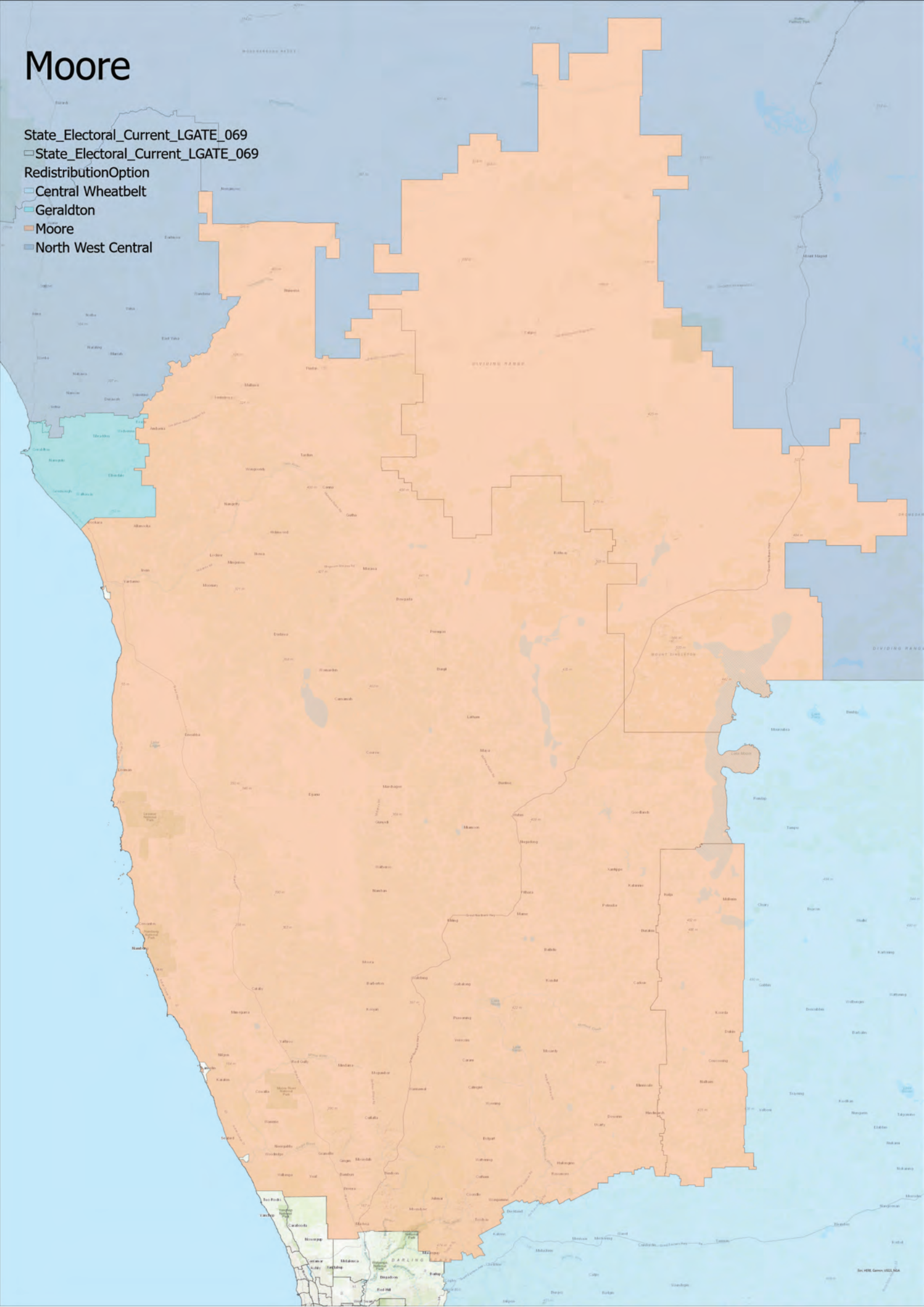
RedistributionOption

□ Central Wheatbelt

□ Geraldton

□ Moore

□ North West Central



Murray Wellington

State_Electoral_Current_LGATE_069

□ State_Electoral_Current_LGATE_069

RedistributionOption

■ Bunbury

□ Central Wheatbelt

■ Collie-Preston

■ Dawesville

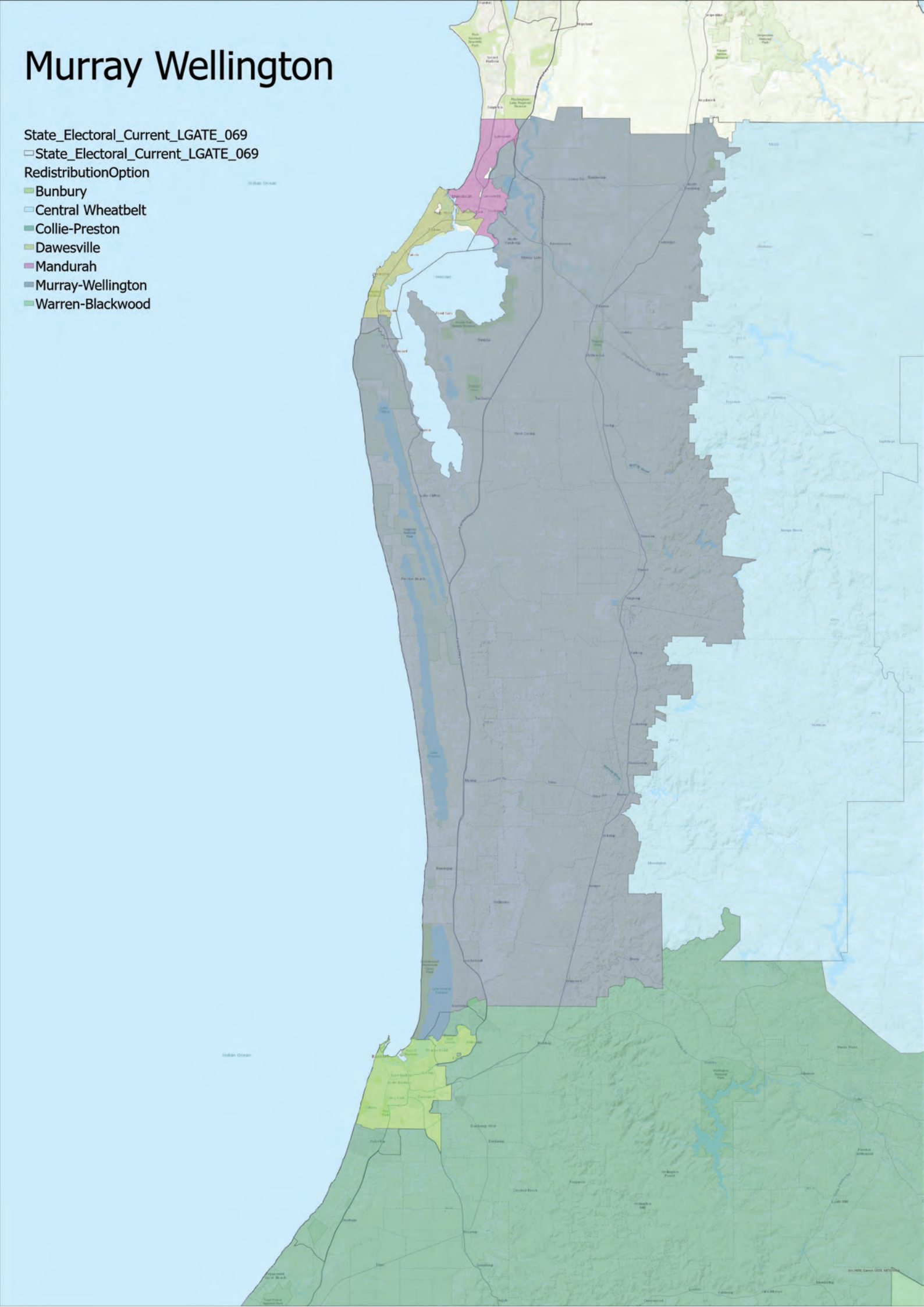
■ Mandurah

■ Murray-Wellington

■ Warren-Blackwood

Indian Ocean

Indian Ocean



North West Central

State_Electoral_Current_LGATE_069

State_Electoral_Current_LGATE_069

RedistributionOption

Central Wheatbelt

Geraldton

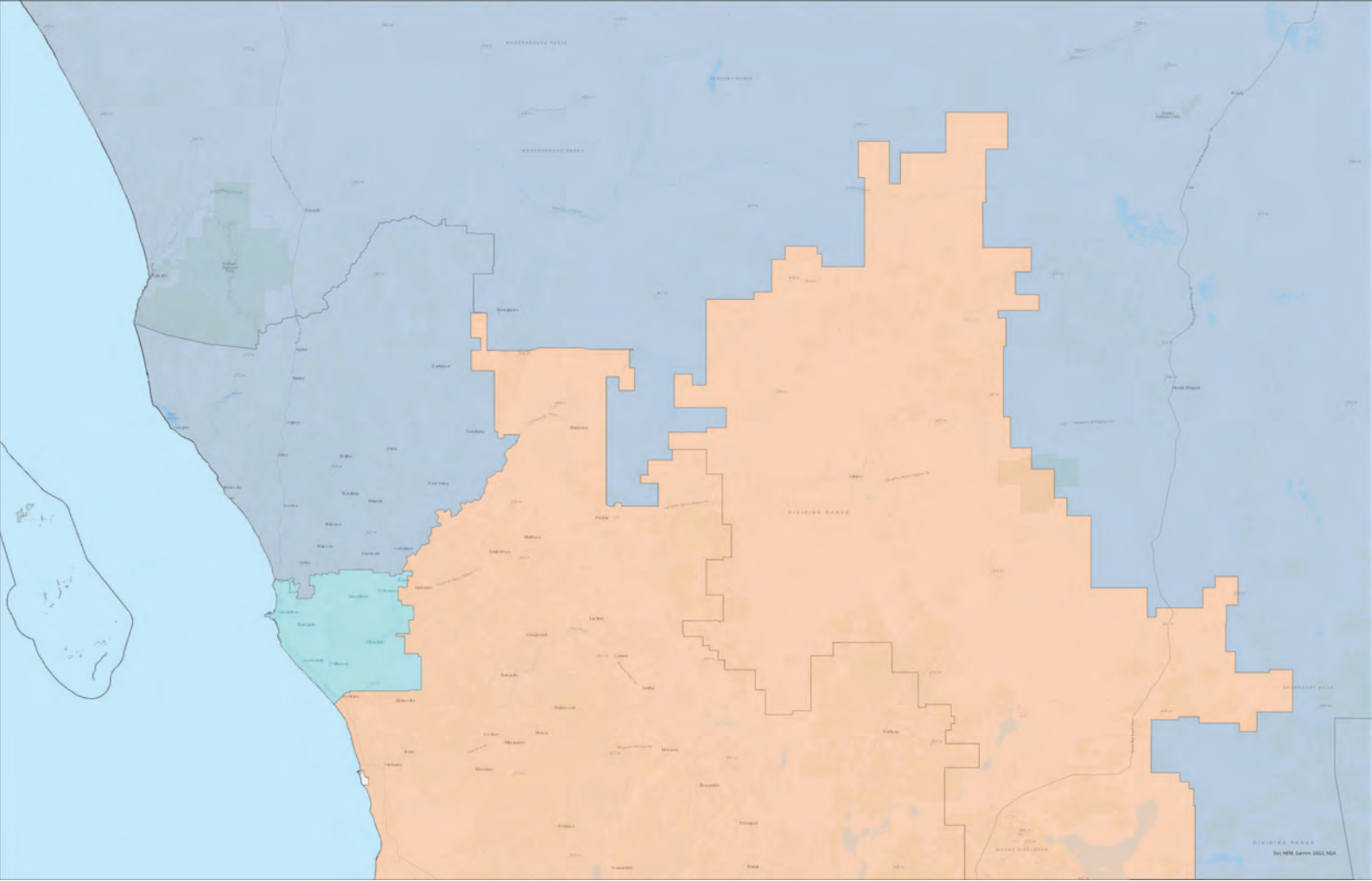
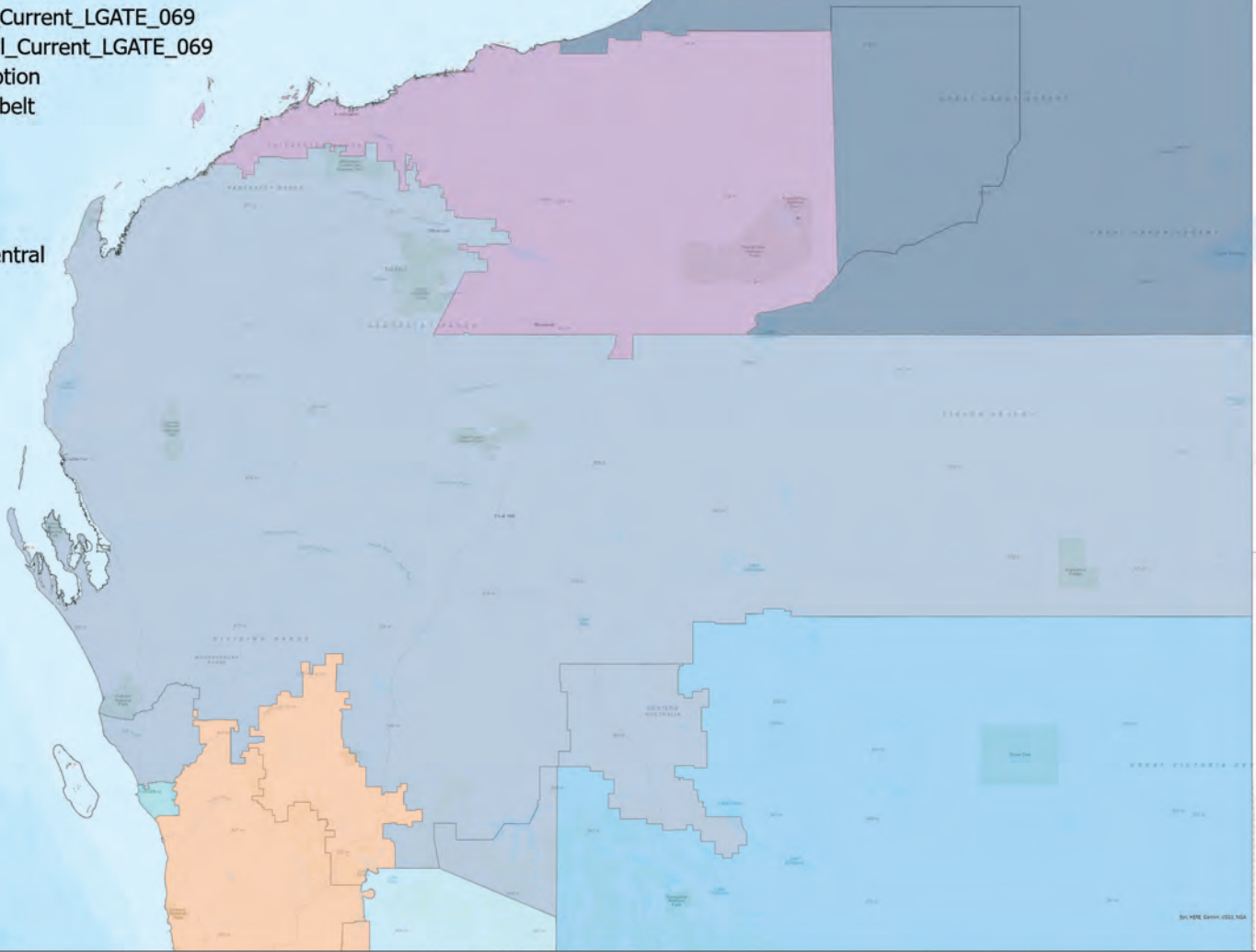
Kalgoorlie

Kimberley

Moore

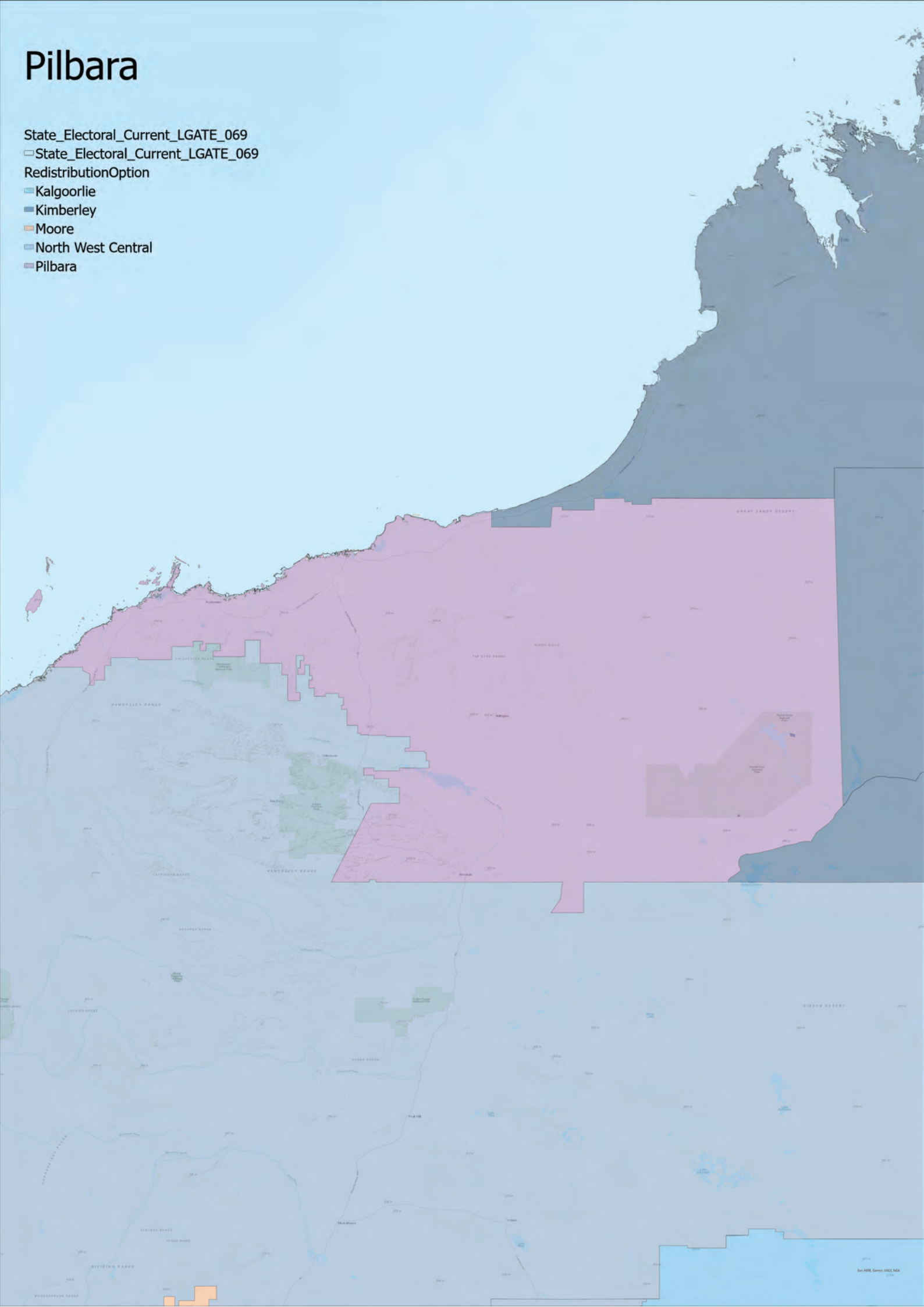
North West Central

Pilbara



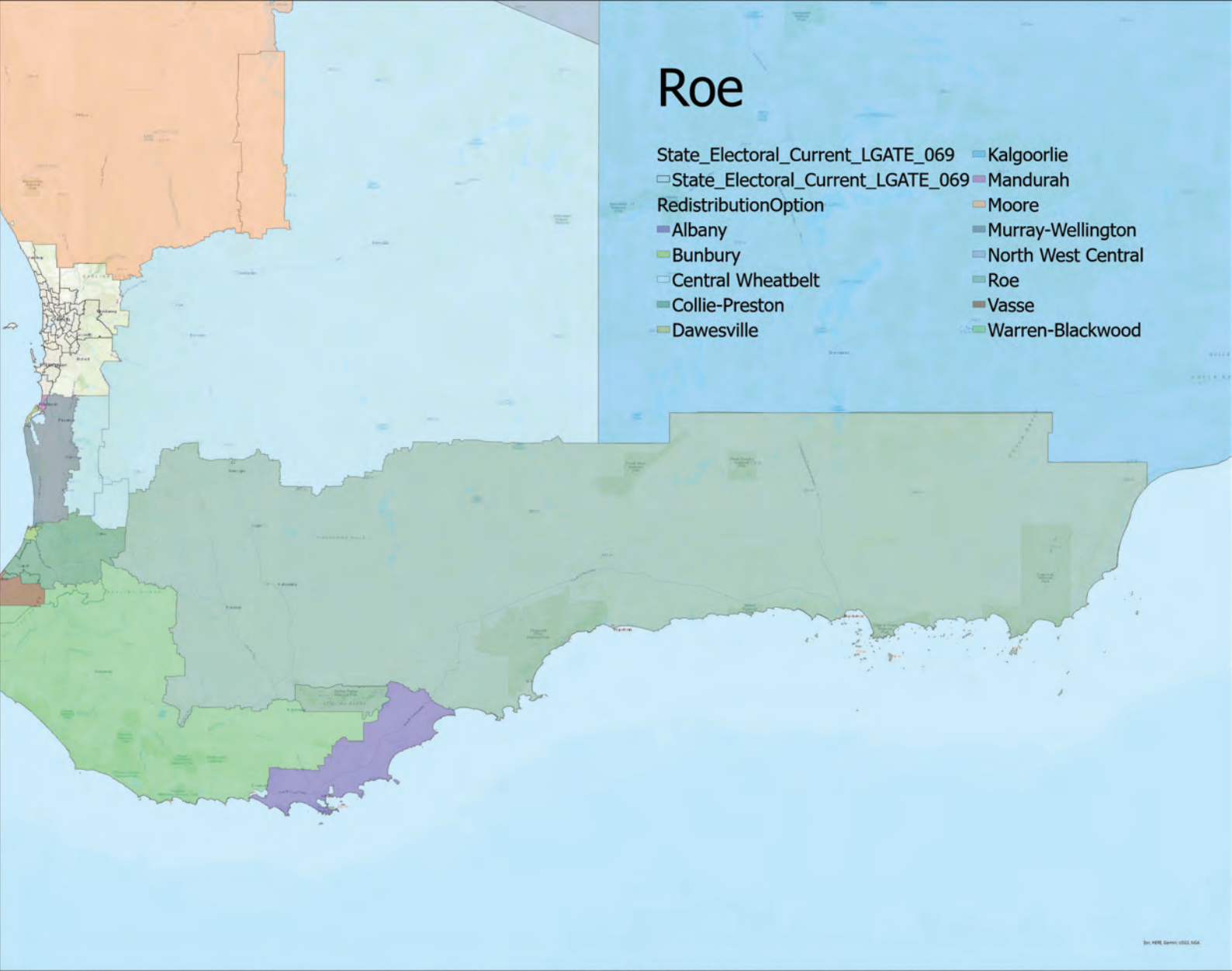
Pilbara

- State_Electoral_Current_LGATE_069
- State_Electoral_Current_LGATE_069
- RedistributionOption
- Kalgoorlie
 - Kimberley
 - Moore
 - North West Central
 - Pilbara

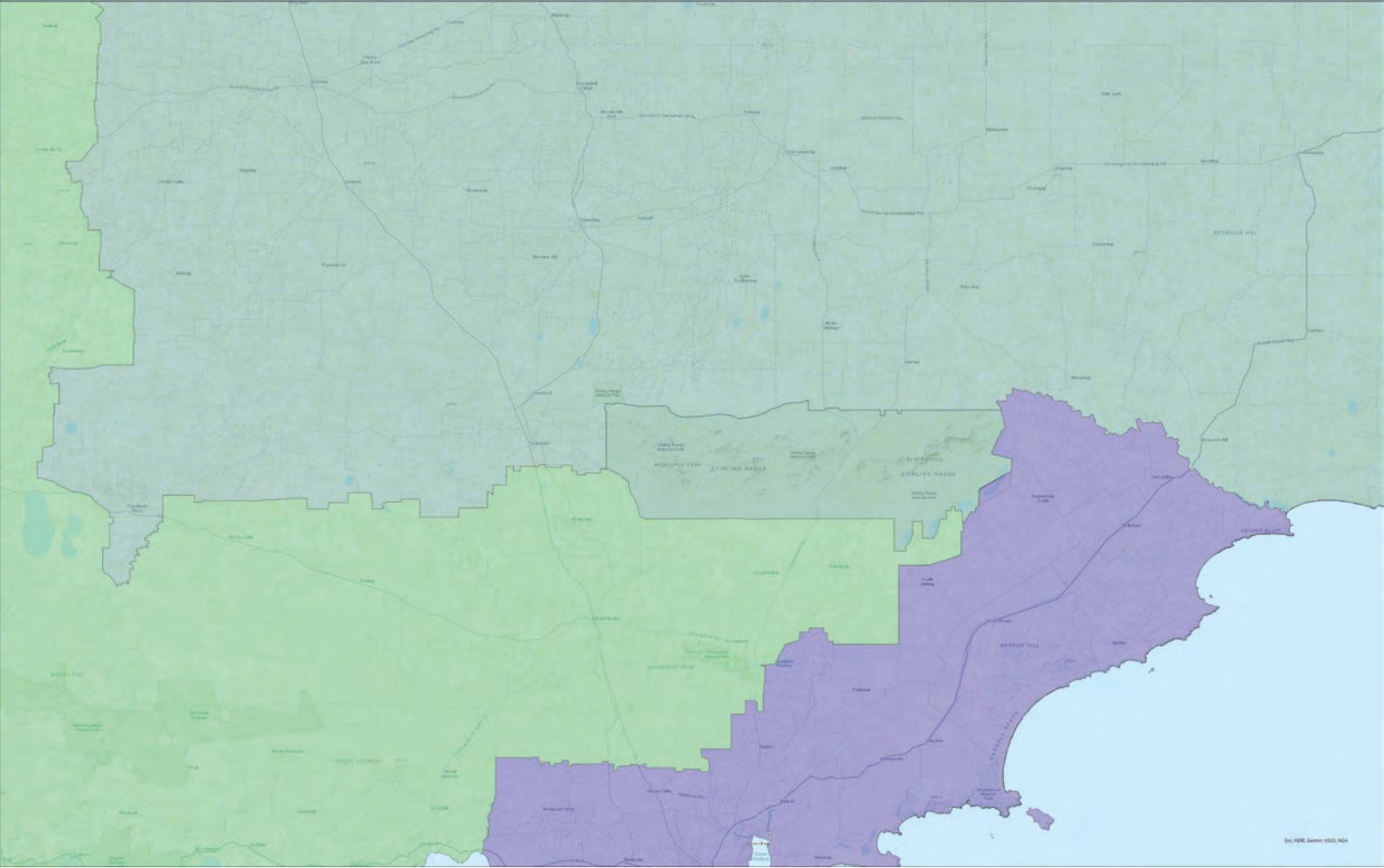


Roe

- | | |
|-----------------------------------|--------------------|
| State_Electoral_Current_LGATE_069 | Kalgoorlie |
| State_Electoral_Current_LGATE_069 | Mandurah |
| RedistributionOption | Moore |
| Albany | Murray-Wellington |
| Bunbury | North West Central |
| Central Wheatbelt | Roe |
| Collie-Preston | Vasse |
| Dawesville | Warren-Blackwood |



© 1998 Geomatics Ltd. All Rights Reserved.



© 1998 Geomatics Ltd. All Rights Reserved.

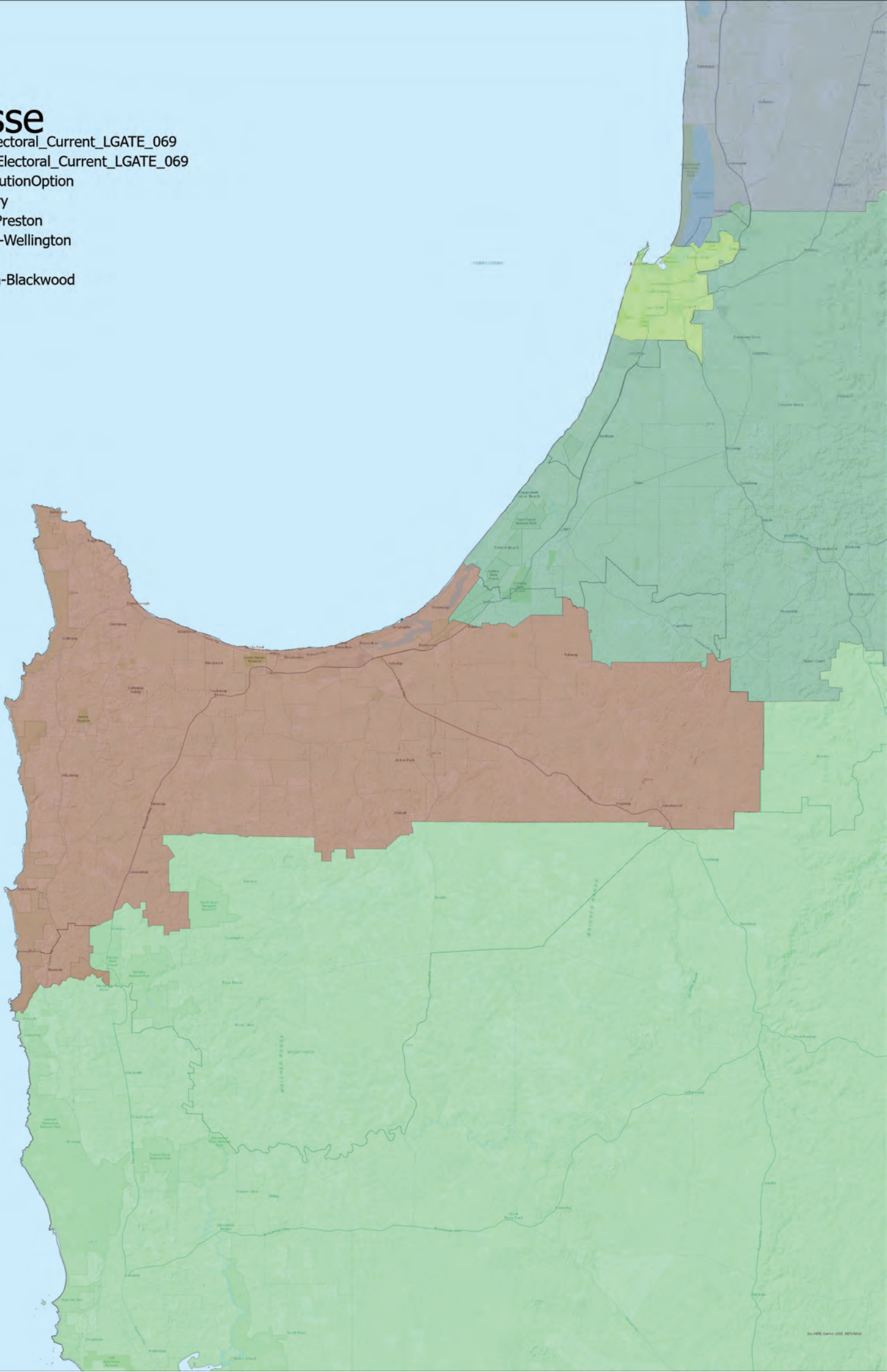
Vasse

State_Electoral_Current_LGATE_069

□ State_Electoral_Current_LGATE_069

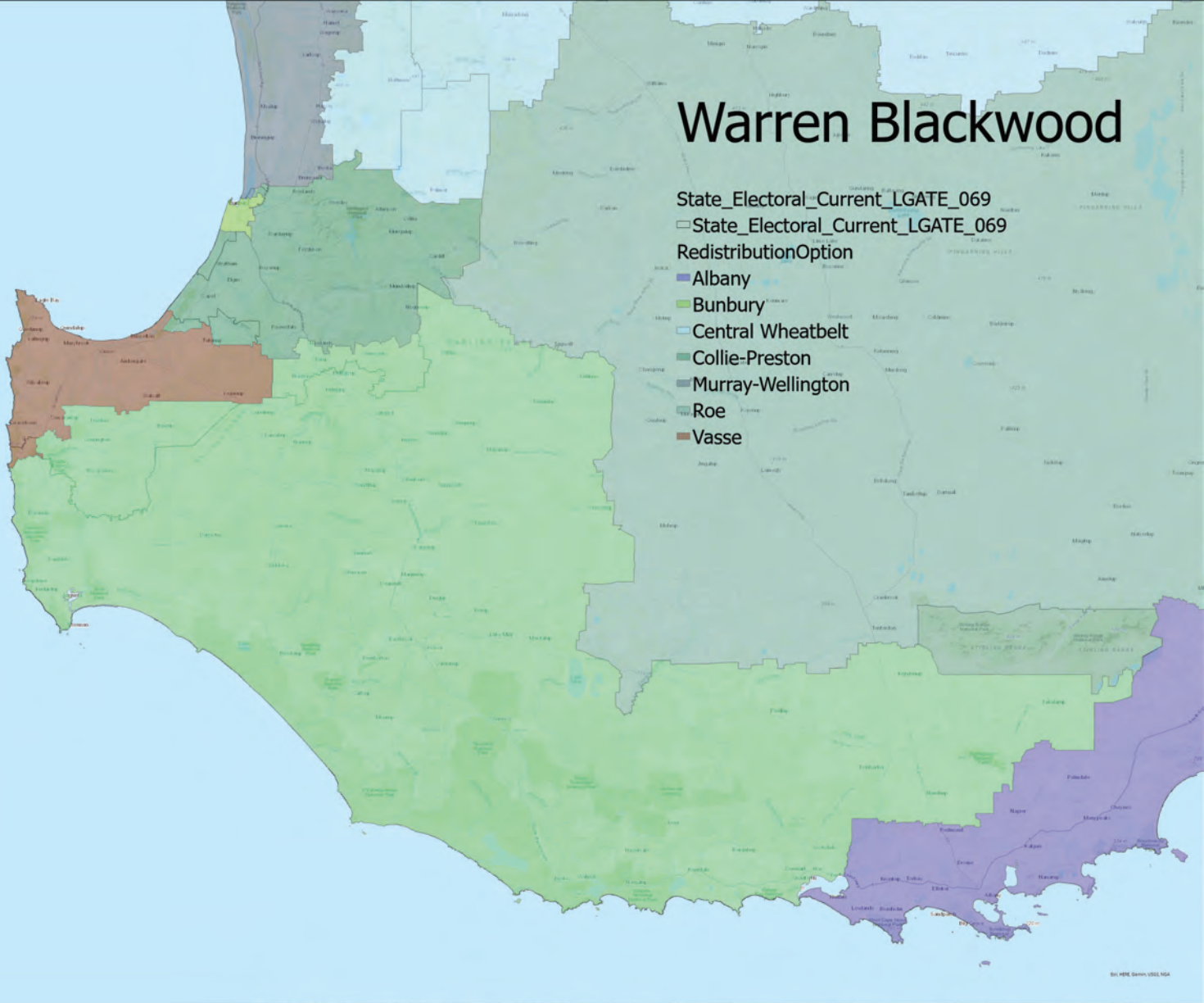
RedistributionOption

- Bunbury
- Collie-Preston
- Murray-Wellington
- Vasse
- Warren-Blackwood

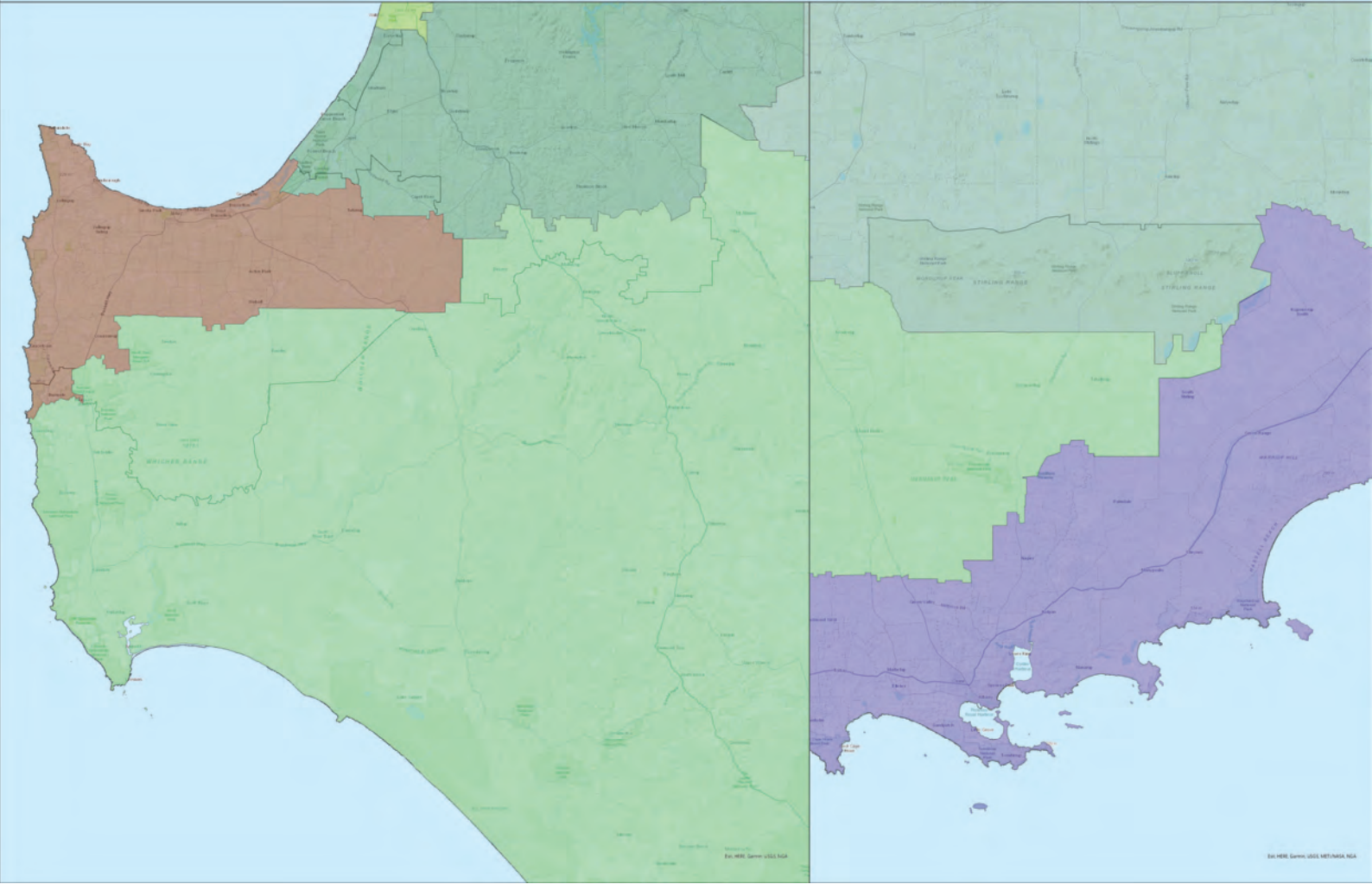


Warren Blackwood

- State_Electoral_Current_LGATE_069
- State_Electoral_Current_LGATE_069
- RedistributionOption
- Albany
 - Bunbury
 - Central Wheatbelt
 - Collie-Preston
 - Murray-Wellington
 - Roe
 - Vasse



By MBE Group 2022, IGA



By MBE Group 2022, IGA

By MBE Group 2022, IGA