

RESPONSE AND RECOMMENDED ADJUSTMENTS TO THE DISTRIBUTION COMMISSION 2019 PROPOSED BOUNDARIES - Submission & Recommendations affecting the districts of Churchlands, Cottesloe and Nedlands.

Introduction and Aim

1. This submission is made by Mr Sean L'Estrange MLA (Member for Churchlands) and Dr David Honey MLA (Member for Cottesloe) with input from Hon Bill Marmion MLA (Member for Nedlands).
2. The aim of this submission is to recommend to the Distribution Commission changes to the '2019 Distribution Boundaries Proposal' so that:
 - a. The variation difference for enrolment numbers supports and/or improves the Distribution Commission 2019 proposal;
 - b. The enrolment elector boundaries take into account the sitting Members' of Parliament's knowledge of the communities of interest; land use patterns; means of communication and travel to Perth; physical features; existing boundaries of districts; existing local government boundaries; and predicted future changes to elector numbers for the Churchlands, Cottesloe and Nedlands districts.

Situation prior to the proposed district boundary changes

3. Page 1 of the Distribution Commission document titled '2019 WA Distribution Review of State Electoral Boundaries Process Overview' advises, in relation to Average District Enrolment (ADE):

*"The Commissioners determined 11 March 2019 to be the relevant day for the purposes of this Distribution... As at that date the **ADE was 27,573**. Applying the 10% variation rule, this means that at the completion of the Distribution, as a general rule Legislative Assembly districts must have at least 24,816 enrolled electors but no more than 30,330."*

4. Page 5 shows, as at 11 March 2019, that the variation on ADE for Churchlands, Cottesloe and Nedlands is well within the AED 10% variation rule (with all three districts almost matching the 11 March 2019 AED):

	Current elector numbers	Variation on ADE (27,573)
Churchlands	27,023	-1.99%
Cottesloe	27,499	-0.27%
Nedlands	27,637	+0.23%
Total	82,159	Av: -0.68%

Recommendation 1: Given the AED for the existing electoral district boundaries of Churchlands, Cottesloe and Nedlands almost matches the 11 March 2019 AED of 27,573 (and all three districts are well within the 10% variation rule), **it is recommended the current boundaries for Churchlands, Cottesloe and Nedlands not be changed.**



Distribution Commission proposed changes 2019

	Current elector numbers	Current variation on ADE (27,573) %	Commission 2019 proposed numbers	Commission 2019 proposed variation on ADE (27,573) %
Churchlands	27,023	-1.99%	28,417	+3.06%
Cottesloe	27,499	-0.27%	29,433	+6.75%
Nedlands	27,637	+0.23%	29,036	+5.31%
Total	82,159	Av: -0.68%	86,886	Av: 5.04%

5. Analysis of the proposed Distribution Commission 2019 changes shows the following:
- Puts Cottesloe significantly closer to breaching the AED 10% variation rule.
 - Significantly alters the community demographics of the Churchlands district, by removing the area known as central City Beach, which is not in keeping with page 3 of the Distribution Commission document titled '2019 WA Distribution Review of State Electoral Boundaries Process Overview' which advises:

"Factors to be taken into account in the review of boundaries: In setting the boundaries for both districts and regions the Commissioners are required to take into account:

- *communities of interest*
- *land use patterns*
- *means of communication, means of travel and distance from Perth*
- *physical features*
- *existing boundaries of regions and districts*
- *existing local government boundaries*
- *predicted future increases or decreases in elector numbers"*

Recommendation 2

6. If recommendation 1 (above) is not supported: **Recommendation 2** accepts the Distribution Commission's proposal to increase elector numbers and to add the section of West Perth to the Nedlands district; however, it is recommended that the central City Beach area be retained in the Churchlands district, and not reside in the Cottesloe district, (which is in keeping with the 'factors to be taken into account' mentioned above). This is because:

- Relating to communities of interest; existing district boundary; existing Local Government boundary:** A large proportion of the Churchlands electorate resides in the Town of Cambridge, with Floreat and central City Beach forming the majority part of the Coastal Ward for this council
- Relating to physical features:** Central City Beach is a community which is not geographically connected to the electoral district of Cottesloe. In fact, it is significantly disconnected by the vast expanse of Bold Park to its south; Perry Lakes to its south-east and by the Commonwealth Defence land at Swanbourne in the south-west.
- Relating to means of communication, means of travel and distance from Perth:** The district has always had a west-east orientation, from the coast, with its major transport

corridors to the city also having a west-east orientation linking the coastal suburbs to the city; a key community in this coastal orientation of the electoral district of Churchlands is **central City Beach**.

- f. **Relating to existing district boundary:** **Central City Beach** is a community which is geographically connected to the electoral district of Churchlands. It sits to the north of the vast expanse of Bold Park to its south; Perry Lakes to its south-east and by the Commonwealth Defence land at Swanbourne in the south-west. As such, **central City Beach** sits naturally within the current Churchlands district boundary.
- g. **Relating to land use patterns:** The land use pattern of **central City Beach** is part of the 'garden suburbs architecture' which is also a key feature of the Churchlands district/Coastal Ward.

Achievement of Recommendation 2.

7. (If recommendation 1 is not supported) We make the following suggested adjustments to support Recommendation 2:

h. Recommendation 2 matches the Distribution Commission's proposed 2019 enrolment total numbers for the districts of Churchlands, Cottesloe and Nedlands and evens out the ADE increase across the three electoral districts. It does this while making adjustments to the Distribution Commission proposed 2019 district boundaries so that the key communities of interest are supported, with the key outcomes being to preserve central City Beach's connection in the Churchlands district while accepting the Distribution Commission recommendation for part of the suburb of West Perth to be added to the Nedlands electorate. **In sum:**

i. **Recommendation 2:**

- 1. Takes the proposed area of central City Beach from the district of Cottesloe and gives this to the district of Churchlands;
- 2. Takes part of the suburb of Floreat from the district of Nedlands and gives this to the district of Cottesloe;
- 3. Takes part of the suburb of West Leederville from the district of Churchlands and gives this to the district of Nedlands.
- 4. Achieving these changes is outlined below:

a. **District of Churchlands:**

- i. Cede part of West Leederville to Nedlands (-1,356), north of Cambridge Street, east of Blencowe Street and south of Lake Monger Drive (SA1s: 5104310, 5104337, 5104338 and 5104339)
- ii. Gain central City Beach from Cottesloe (+1,934), bounded by The Boulevard to the north, Bold Park Drive to the east and Oceanic Drive to the south (SA1s: 5103001, 5103004, 5103005, 5103009, 5103010, 5103011 and 5103012).

b. **District of Cottesloe:**

- i. Cede central City Beach to Churchlands (-1,934), bounded by The Boulevard to the north, Bold Park Drive to the east and Oceanic Drive to the south (SA1s: 5103001, 5103004, 5103005, 5103009, 5103010, 5103011 and 5103012).

- ii. Gain part of Floreat from Nedlands (+1,414), the area contained in SA1s: 5103312, 5103314, 5103316 and 5103320.

c. District of Nedlands:

- i. Cede part of Floreat to Cottesloe (-1,414), the area contained in SA1s: 5103312, 5103314, 5103316 and 5103320.
- ii. Gain part of West Leederville from Churchlands (+1,356), north of Cambridge Street, east of Blencowe Street and south of Lake Monger Drive (SA1s: 5104310, 5104337, 5104338 and 5104339)

8. Recommendation 2 elector numbers become:

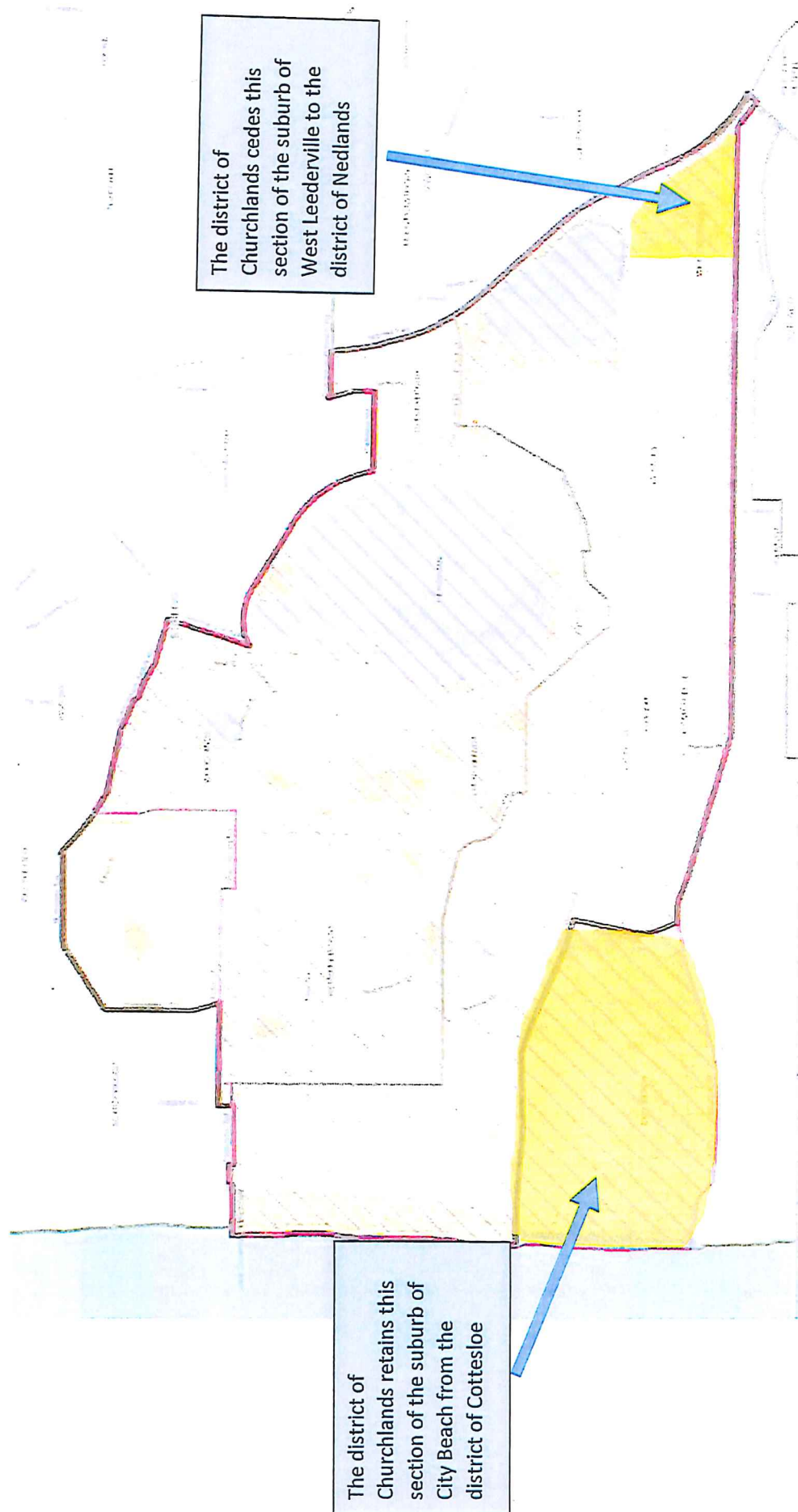
	Current elector numbers	Commission 2019 proposed numbers (and % change on ADE 27,573)	Recommendation 2 proposed numbers (and % change on ADE 27,573)	Recommendation 2 variation to Commission 2019 proposed numbers %
Churchlands	27,023	28,417 (3.06%)	28,995 (5.16%)	+2.10%
Cottesloe	27,499	29,433 (6.75%)	28,913 (4.86%)	-1.89%
Nedlands	27,637	29,036 (5.31%)	28,978 (5.10%)	-0.21%
Total	82,159	86,886	86,886	

1. Recommendation 2 Maps

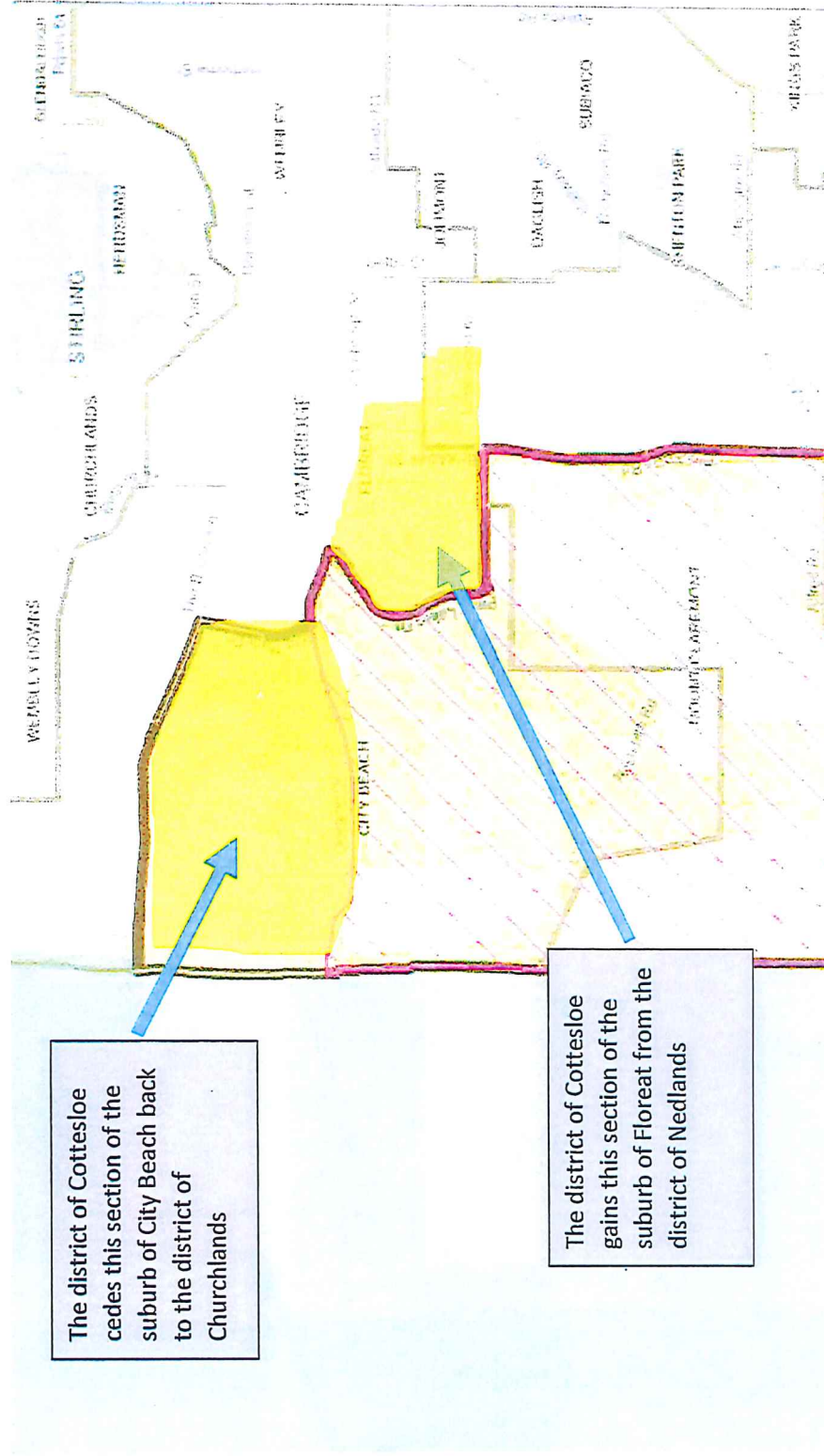
- b. Maps depicting Recommendation 2 are provided below.

- i. Map 1: Churchlands
- ii. Map 2: Cottesloe
- iii. Map 3: Nedlands

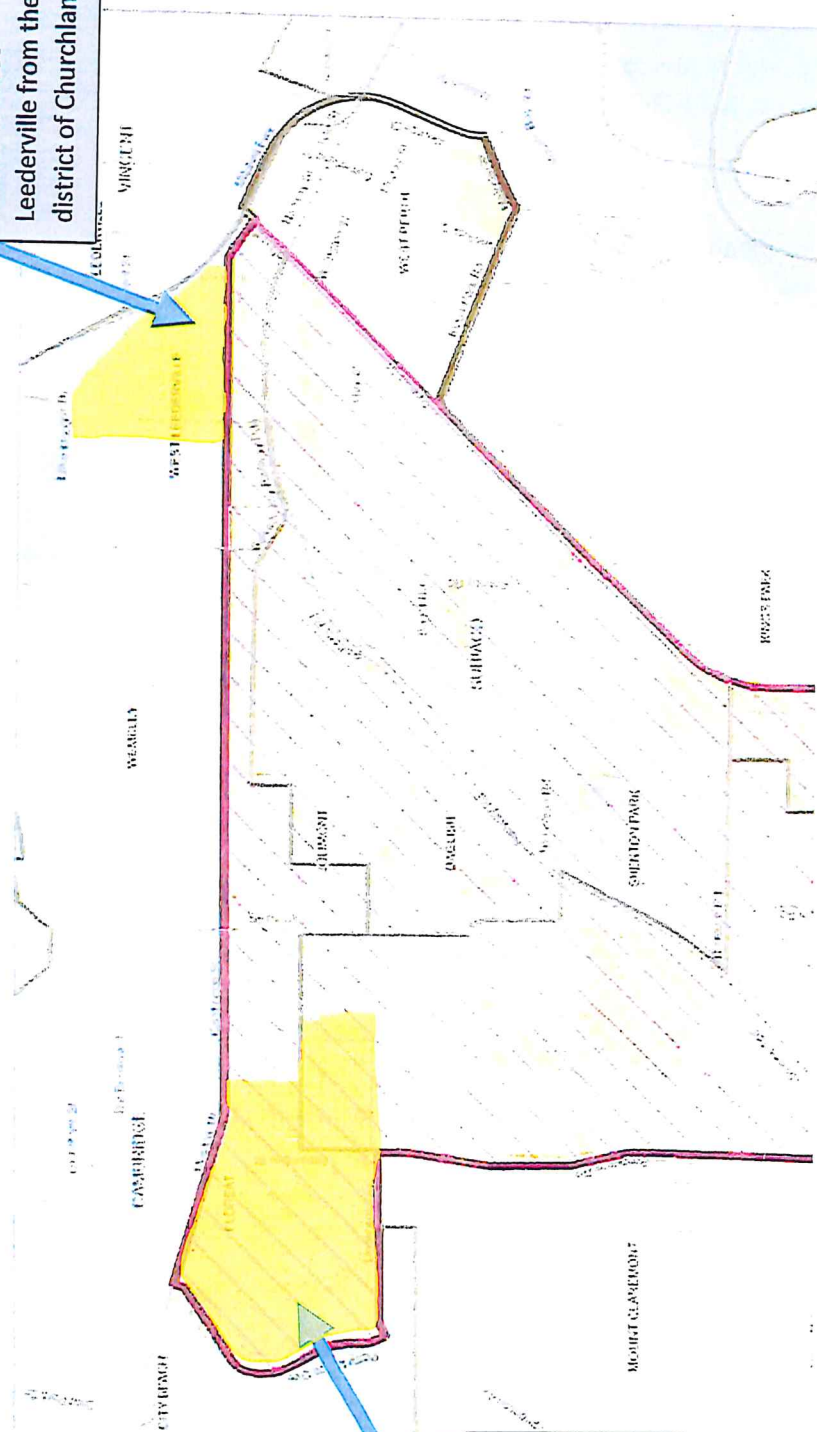
MAP 1 CHURCHLANDS – Showing Recommendation 2 Adjustments



MAP 2: COTTESLOE – Showing Recommendation 2 Adjustments



2. MAP 3: NEDLANDS – Showing Recommendation 2 Adjustments



The district of Nedlands gains this section of the suburb of West Leederville from the district of Churchlands

The district of Nedlands cedes this section of the suburb of Floreat to the district of Cottesloe

Conclusion

9. In conclusion, it is recommended that the Distribution Commission adopt **Recommendation 1** in order to closely achieve the 11 March 2019 AED of 27,573. However, if there is a desire to increase the number of enrolments in the districts of Churchlands, Cottesloe and Nedlands (above the 11 March 2019 AED) in an effort to prepare for the future, we recommend the adoption of **Recommendation 2**.
10. We ask that the above recommendations be taken into due consideration so that the electoral districts of Churchlands, Cottesloe and Nedlands better reflect the communities of interest they represent.
11. We would welcome the opportunity to meet with you in person if you would like us to answer any questions in relation to the above, or if you would like further explanation supporting our recommendations.

Mr Sean L'Estrange MLA

Member for Churchlands

3A/151 Herdsman Pde

Wembley WA 6913

Tel: 9383 7120

sean.lestrange@mp.wa.gov.au

Dr David Honey MLA

Member for Cottesloe

12/589 Stirling Hwy

Cottesloe WA 6011

9383 1505

david.honey@mp.wa.gov.au

Hon Bill Marmion MLA

Member for Nedlands

1/160 Hampden Rd

Nedlands WA 6009

9386 3064

bill.marmion@mp.wa.gov.au

Attachments

ANNEX A: RECOMMENDATION 2 – OPTION B – The adjustment of the suburb of Scarborough option.¹

¹ This option has been provided in the event that there is a request to adjust the district boundaries of Churchlands and Scarborough so that all of the suburb of Scarborough sits in the district of Scarborough.

RECOMMENDATION 2 – OPTION B – The adjustment of the suburb of Scarborough option.

As with Recommendation 2, this 'Option B' preserves central City Beach's connection in the Churchlands district. This option also makes an adjustment to the northern boundary of the District Commission's boundary of Churchlands so that all of the suburb of Scarborough is retained in the district of Scarborough. As a result of this change, slight adjustments have also been made to the district boundaries of Nedlands and Cottesloe (outlined below).

Recommendation 2 Option B: 'Ceding the section of the suburb of Scarborough from the district of Churchlands to the district of Scarborough:

1. Takes the proposed area of the suburb of Scarborough from the proposed district of Churchlands and gives this (back) to the district of Scarborough.
2. Takes the proposed area of central City Beach from the district of Cottesloe and gives this to the district of Churchlands;
3. Takes parts of the suburb of Floreat from the district of Nedlands and gives this to the district of Cottesloe;
4. Takes parts of the suburb of West Leederville from the district of Churchlands and gives this to the district of Nedlands. **Achieving these changes is outlined below:**
 - a. **District of Churchlands:**
 - i. Cede Scarborough SA1s to district of Scarborough (-1,078): 5109225, 5109226 and 5109232.
 - ii. Cede a section of the suburb of West Leederville (-328): SA1 5104337 to the district of Nedlands.
 - iii. Gain central City Beach from district of Cottesloe (+1,934), bounded by The Boulevard to the north, Bold Park Drive to the east and Oceanic Drive to the south (SA1s: 5103001, 5103004, 5103005, 5103009, 5103010, 5103011 and 5103012).
 - b. **District of Cottesloe:**
 - i. Cede central City Beach to district of Churchlands (-1,934), bounded by The Boulevard to the north, Bold Park Drive to the east and Oceanic Drive to the south (SA1s: 5103001, 5103004, 5103005, 5103009, 5103010, 5103011 and 5103012).
 - ii. Gain part of Floreat from district of Nedlands (+777), located west of Brookdale Street, SA1 areas 5103314 and 510312.
 - c. **District of Nedlands:**
 - i. Cede part of Floreat to district of Cottesloe (-777), located west of Brookdale Street, SA1 areas 5103314 and 510312.
 - ii. Gain a section of the suburb of West Leederville (+328): SA1 5104337 from the district of Churchlands.

5. Recommendation 2 elector numbers become:

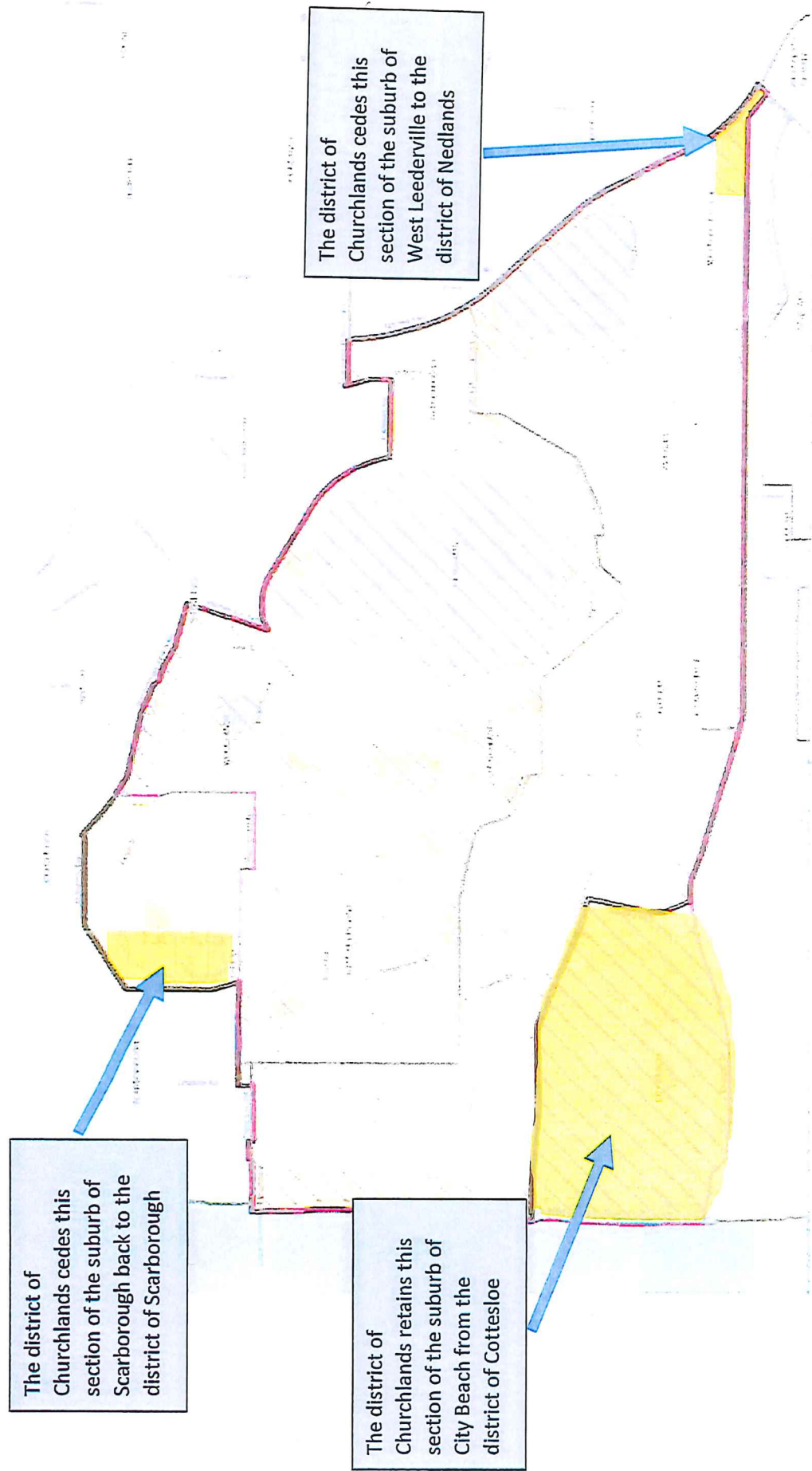
	Current elector numbers	Commission 2019 proposed numbers (and % change on ADE 27,573)	Recommendation 2 'Option B' proposed numbers (and % change on ADE 27,573)	Recommendation 2 'Option B' variation to Commission 2019 proposed numbers %
Churchlands	27,023	28,417 (3.06%)	28,945 (4.98%)	+1.91%
Cottesloe	27,499	29,433 (6.75%)	28,276 (2.55%)	-4.20%
Nedlands	27,637	29,036 (5.31%)	28,587 (3.68%)	-1.63%
Total	82,159	86,886	85,808	

1. Recommendation 2 (Option B) Maps

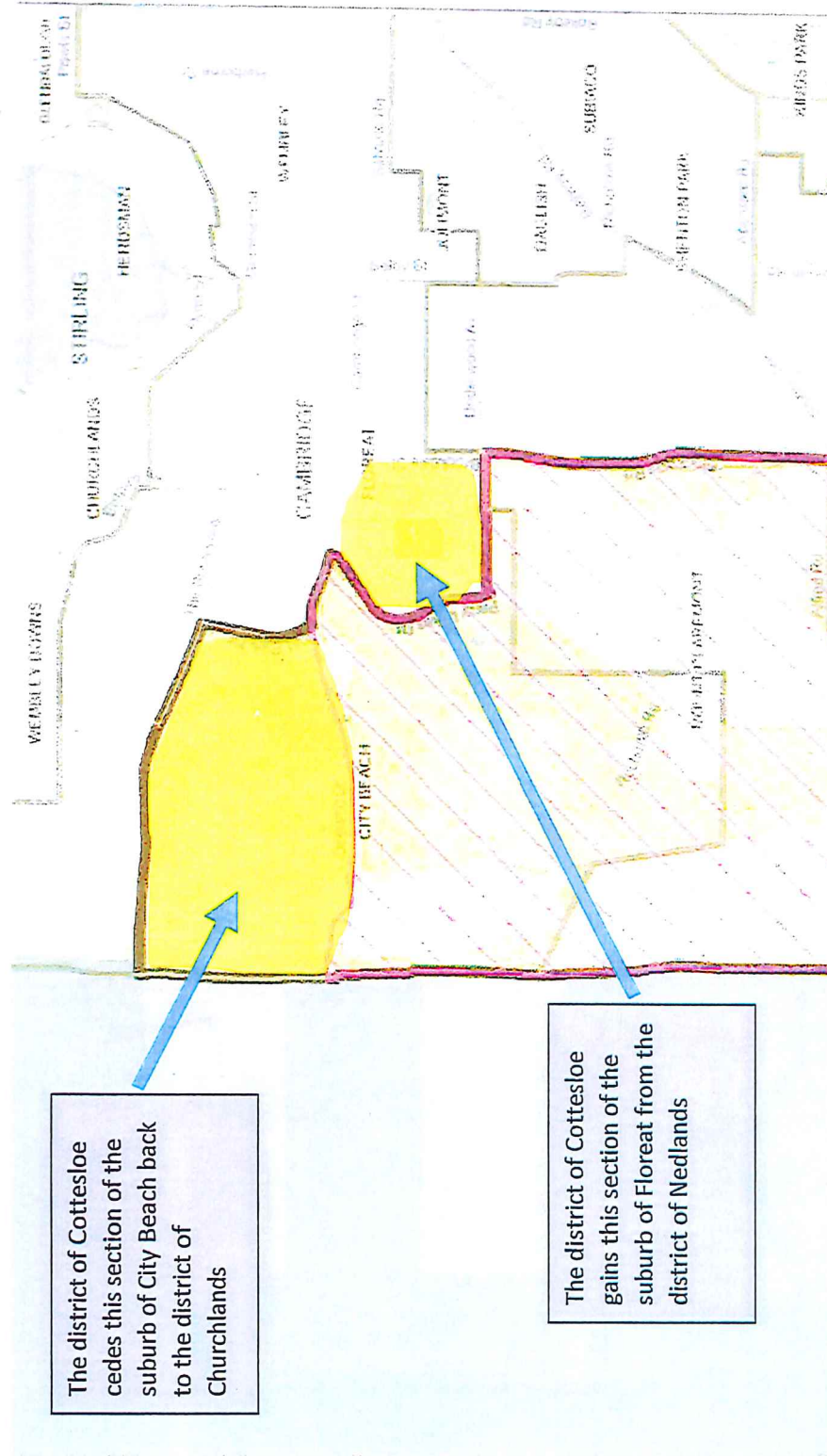
b. Maps depicting Recommendation 2 (Option B) are provided below.

- i. Map 1: Churchlands
- ii. Map 2: Cottesloe
- iii. Map 3: Nedlands

MAP 1 CHURCHLANDS – Showing Recommendation 2 (Option B) Adjustments



MAP 2: COTTESLOE – Showing Recommendation 2 (Option B) Adjustments



MAP 3: NEDLANDS – Showing Recommendation 2 (Option B) Adjustments

