



The region contains 10 districts as follows:

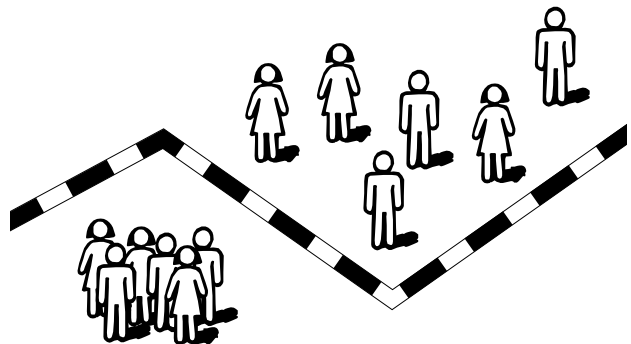
- **Armadales**
- **Ballajura**
- **Bassendean**
- **Belmont**
- **Darling Range**
- **Kenwick**
- **Midland**
- **Serpentine-Jarrahdale**
- **Southern River**
- **Swan Hills**

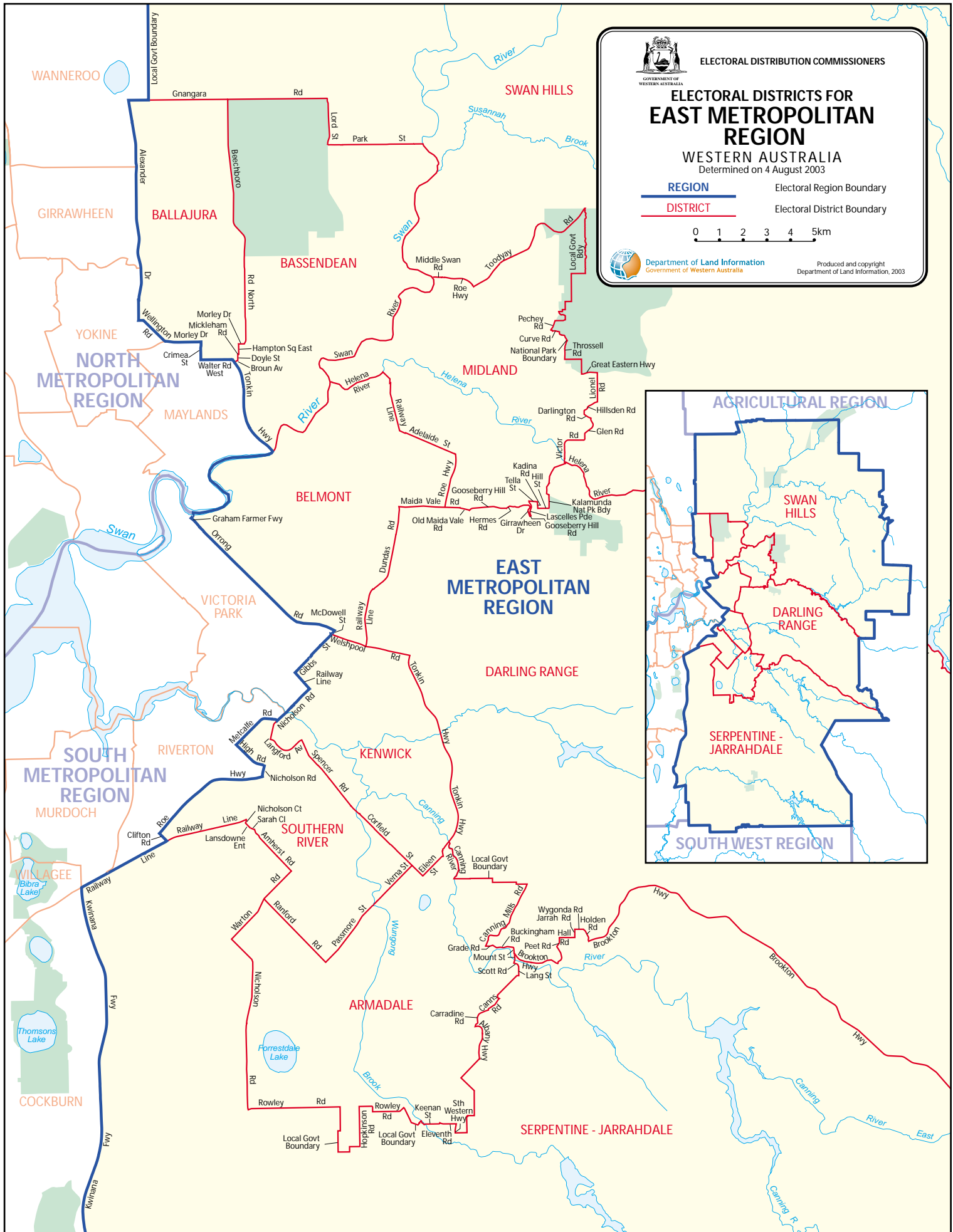
Districts based on the regional centres of Midland and Armadale have been retained. Districts with slower growth have been increased in geographical size, in order to balance with the high growth areas within the region. The changes are such that in some cases, a new and more appropriate name for the district has been adopted. All of the districts are projected to be near to quota at the mid-point for this division of the State.

Following objections, a small change has been made to the proposal for Southern River with the removal of a small portion of the suburb of Parkwood to the South Metropolitan Region district of Riverton.

Elector statistics for the East Metropolitan Region districts

District	Elector Enrolment 11/2/02	Deviation from 2002 Quotient	Projected Enrolment 11/2/07	Deviation from 2007 Quotient
Armadales	28,125	6.32	28,902	-0.65
Ballajura	27,095	2.42	29,127	0.12
Bassendean	25,780	-2.55	28,790	-1.04
Belmont	26,657	0.77	29,415	1.11
Darling Range	28,609	8.15	29,308	0.74
Kenwick	27,022	2.15	29,130	0.13
Midland	25,823	-2.39	29,358	0.91
Serpentine-Jarrahdale	23,702	-10.40	28,690	-1.38
Southern River	24,732	-6.51	27,940	-3.96
Swan Hills	24,117	-8.83	28,800	-1.00
Total	261,662	-1.09	289,460	-0.50
Average	26,166		28,946	







The region contains 14 districts as follows:

- **Balcatta**
- **Carine**
- **Churchlands**
- **Cottesloe**
- **Girrawheen**
- **Hillarys**
- **Joondalup**
- **Kingsley**
- **Maylands**
- **Mindarie**
- **Nedlands**
- **Perth**
- **Wanneroo**
- **Yokine**

The population growth within the North Metropolitan Region is focused on the north of the region, with slower population growth occurring closer to the river.

New and substantially revised districts set at the lower end of the population range have been

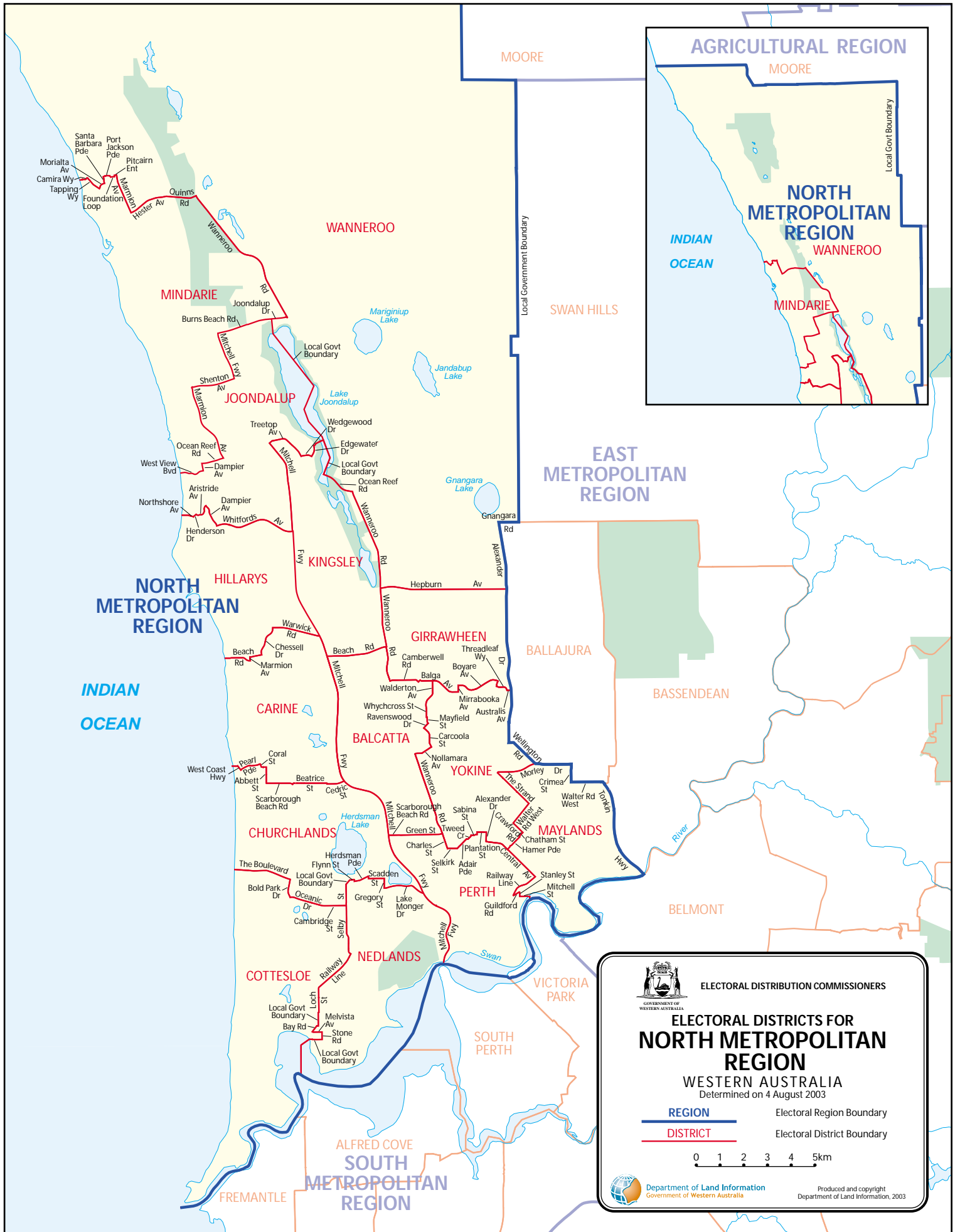
determined for the northern portion of the region to deal with the projected population expansion. Conversely, districts closer to the city have grown in area and a current district has been absorbed into adjacent districts. Boundaries have been set having regard to the significance of the Mitchell Freeway as a divide between east and west, and where the region boundary with East Metropolitan Region has been adjusted, major roads have been followed.


It had been proposed to create a new district of Heathridge as part of this division of the State. Representations were made to the Commissioners that in doing so, the importance of Joondalup as a regional centre had been overlooked. In hindsight, this point is acknowledged. This determination contains a revision to the boundary between the proposed electorates of Mindarie and Heathridge, so that an electorate of Joondalup has been created incorporating the entire suburb of Joondalup and the Joondalup civic centre.

Some new names have been determined for districts where these more accurately reflect the area contained in the district.

Elector statistics for the North Metropolitan Region districts


District	Elector Enrolment 11/2/02	Deviation from 2002 Quotient	Projected Enrolment 11/2/07	Deviation from 2007 Quotient
Balcatta	28,224	6.69	29,103	0.04
Carine	27,453	3.78	29,055	-0.13
Churchlands	27,686	4.66	28,684	-1.40
Cottesloe	27,845	5.26	28,661	-1.48
Girrawheen	26,741	1.08	29,148	0.19
Hillarys	28,364	7.22	28,762	-1.13
Joondalup	25,607	-3.20	29,011	-0.28
Kingsley	27,949	5.65	28,424	-2.30
Maylands	27,591	4.30	28,988	-0.36
Mindarie	22,555	-14.74	28,515	-1.98
Nedlands	27,453	3.78	29,134	0.14
Perth	26,399	-0.21	28,774	-1.09
Wanneroo	22,525	-14.85	32,374	11.28
Yokine	27,776	5.00	29,092	0.00
Total	374,168	1.03	407,725	0.11
Average	26,726		29,123	




ELECTORAL DISTRIBUTION COMMISSIONERS
ELECTORAL DISTRICTS FOR NORTH METROPOLITAN REGION
WESTERN AUSTRALIA
 Determined on 4 August 2003

REGION Electoral Region Boundary
DISTRICT Electoral District Boundary

0 1 2 3 4 5km


 Department of Land Information
 Government of Western Australia

Produced and copyright
 Department of Land Information, 2003



The region contains 10 districts as follows:

- **Alfred Cove**
- **Cockburn**
- **Fremantle**
- **Murdoch**
- **Peel**
- **Riverton**
- **Rockingham**
- **South Perth**
- **Victoria Park**
- **Willagee**

The population growth of the region is focused on the southern end of the region and districts in that area have contracted in size. Districts closer to the river have expanded in area so as to ensure that all districts will be near to quotient at the mid-point for this division of the State.

At the southern end of the region, the Kwinana Freeway has been recognized as a divide that should form part of the boundary with the East Metropolitan Region. While generally freeways have been used as boundaries, there is an unavoidable exception in the case of Murdoch, having regard for its population distribution and enrolment projections.

Two of the districts in the region are constrained by the Swan and Canning Rivers and the adjustments, necessary in this area to ensure that elector populations are on quota, have pushed the region boundary with East Metropolitan Region to the south and east.

Following objections, the boundary proposed for the electorate of Riverton has been adjusted so that it now includes the entire suburb of Parkwood.

Elector statistics for the South Metropolitan Region districts

District	Elector Enrolment 11/2/02	Deviation from 2002 Quotient	Projected Enrolment 11/2/07	Deviation from 2007 Quotient
Alfred Cove	27,708	4.74	29,327	0.81
Cockburn	24,556	-7.17	28,946	-0.50
Fremantle	26,689	0.89	28,882	-0.72
Murdoch	28,015	5.90	29,411	1.10
Peel	22,633	-14.44	29,308	0.74
Riverton	28,614	8.17	29,749	2.26
Rockingham	25,895	-2.11	29,669	1.98
South Perth	27,725	4.80	29,093	0.00
Victoria Park	25,903	-2.08	28,905	-0.64
Willagee	25,882	-2.16	28,675	-1.43
Total	263,620	-0.35	291,965	0.36
Average	26,362		29,197	

