

Districts in the metropolitan regions

East Metropolitan Region

(Note: for an explanation of terms, see 'The Final Boundaries – descriptions', p 9)

In the East Metropolitan Region there will be 14 districts, the same number as there is at present. The district currently known as 'Nollamara' will be renamed 'Mirrabooka', effective for the next State general election.

Armadale *No change*

Bassendean

Gains: Beechboro (part) and Morley (part)

Loses: Bayswater (part)

Belmont *No change*

Darling Range

Loses: Beechina, Chidlow, Gorrie, Malmalling, Mount Helena, Sawyers Valley and The Lakes

Forrestfield *No change*

Gosnells

Gains: Gosnells (part) and Thornlie (part) (both from the South Metropolitan Region)

Loses: Huntingdale (part – to the South Metropolitan Region)

Kalamunda *No change*

Maylands

Gains: Bayswater (part), Embleton (remainder) and Maylands (part)

Midland *No change*

Mirrabooka

Gains: Balga (from the North Metropolitan Region) and Ballajura (part)

Loses: Dianella (part) and Nollamara

Morley

Gains: Nollamara

Loses: Beechboro (part), Dianella (part), Embleton (remainder) and Morley (part)

Mount Lawley

Gains: Dianella (part) and Morley (part)

Loses: Highgate (remainder – to the North Metropolitan Region), Maylands (part), Mount Lawley (part – to the North Metropolitan Region) and Perth (remainder – to the North Metropolitan Region)

Swan Hills

Gains: Beechina, Chidlow, Gorrie, Malmalling, Mount Helena, Sawyers Valley and The Lakes

Loses: Ellenbrook and Lexia

West Swan

Gains: Ellenbrook and Lexia

Loses: Ballajura (part) and Landsdale (part – to the North Metropolitan Region)

There will be a minor change to the boundaries between the East and North Metropolitan Regions (the districts of Mirrabooka and West Swan) and between the East and South Metropolitan Regions (the districts of Gosnells and Southern River).

This outcome mirrors the 10 June 2011 proposals other than the idea that the locality of High Wycombe should be split between Belmont and Forrestfield and modest changes made in relation to Ellenbrook and Glen Forrest.

Elector statistics for districts in the East Metropolitan Region

District	Elector Enrolment 6/9/10	Deviation from 2010 Average District Enrolment
Armadale	24,381	5.19%
Bassendean	25,011	7.91%
Belmont	22,024	-4.98%
Darling Range	23,447	1.16%
Forrestfield	24,820	7.08%
Gosnells	25,198	8.72%
Kalamunda	23,661	2.08%
Maylands	24,957	7.68%
Midland	23,954	3.35%
Mirrabooka	25,088	8.24%
Morley	23,914	3.18%
Mount Lawley	24,815	7.06%
Swan Hills	24,346	5.04%
West Swan	24,291	4.80%
Total	339,907	



Office of the
ELECTORAL DISTRIBUTION COMMISSIONERS

2011 Electoral
Boundaries

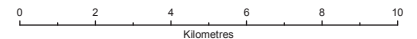
ELECTORAL DISTRICTS FOR EAST METROPOLITAN REGION

WESTERN AUSTRALIA

Determined on 10 October 2011

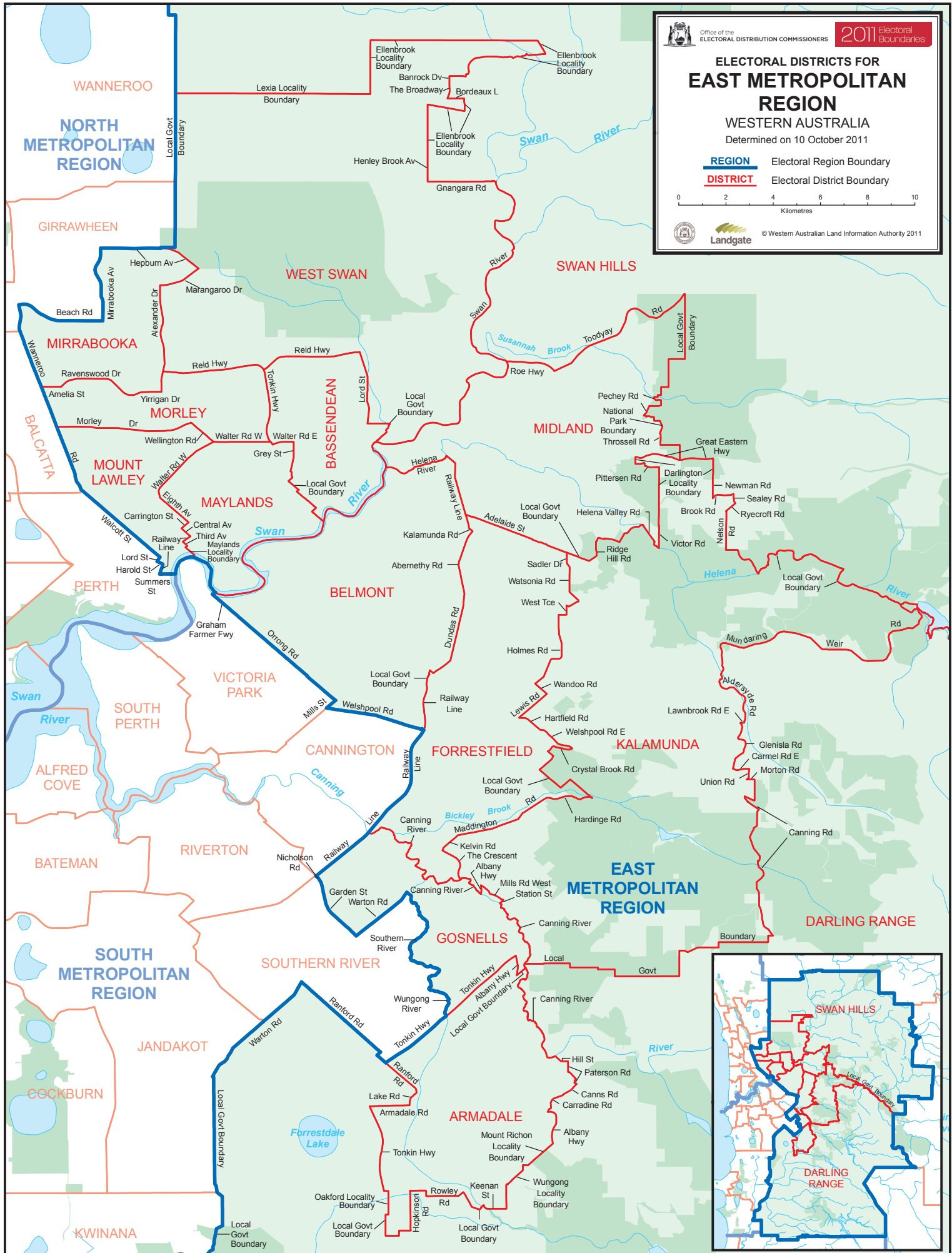
REGION Electoral Region Boundary

DISTRICT Electoral District Boundary



Landgate

© Western Australian Land Information Authority 2011



Districts in the metropolitan regions

North Metropolitan Region

(Note: for an explanation of terms, see 'The Final Boundaries – descriptions', p 9)

In the North Metropolitan Region there will be 14 districts, the same number as there is at present. The district currently known as 'Mindarie' will be renamed 'Butler', effective for the next State general election.

Balcatta

Gains: Hamersley (part)

Butler

Gains: Banksia Grove

Loses: Mindarie

Carine

Gains: Duncraig (remainder)

Loses: Gwelup (part), Marmion, Sorrento (remainder) and Trigg (part)

Churchlands

Gains: City Beach (part) and Woodlands (part)

Loses: Floreat (part)

Cottesloe *No change*

Girrawheen

Gains: Darch, Landsdale (part – from the East Metropolitan Region) and Madeley

Loses: Balga (to the East Metropolitan Region), Hamersley (part) and Warwick (part)

Hillarys

Gains: Kallaroo, Marmion and Sorrento (remainder)

Loses: Duncraig (remainder)

Joondalup

Gains: Currambine (part)

Kingsley

Gains: Warwick (part)

Nedlands

Gains: Floreat (part)

Ocean Reef

Gains: Mindarie

Loses: Currambine (part) and Kallaroo

Perth

Gains: Highgate (remainder), Mount Lawley (part) and Perth (remainder) (all from the East Metropolitan Region)

Scarborough

Gains: Gwelup (part) and Trigg (part)

Loses: City Beach (part) and Woodlands (part)

Wanneroo

Loses: Banksia Grove, Darch, Landsdale (part) and Madeley

This outcome mirrors the 10 June 2011 proposals save for adjustments to Ocean Reef, Joondalup and Hillarys, as described.

Elector statistics for districts in the North Metropolitan Region

District	Elector Enrolment 6/9/10	Deviation from 2010 Average District Enrolment
Balcatta	24,896	7.41%
Butler	24,608	6.17%
Carine	24,456	5.51%
Churchlands	25,130	8.42%
Cottesloe	24,320	4.93%
Girrawheen	25,064	8.14%
Hillarys	24,312	4.89%
Joondalup	23,977	3.45%
Kingsley	25,043	8.05%
Nedlands	24,393	5.24%
Ocean Reef	23,814	2.74%
Perth	25,213	8.78%
Scarborough	24,109	4.02%
Wanneroo	23,434	1.10%
Total	342,769	



Office of the
ELECTORAL DISTRIBUTION COMMISSIONERS

2011 Electoral
Boundaries

ELECTORAL DISTRICTS FOR NORTH METROPOLITAN REGION

WESTERN AUSTRALIA

Determined on 10 October 2011

REGION Electoral Region Boundary

DISTRICT Electoral District Boundary

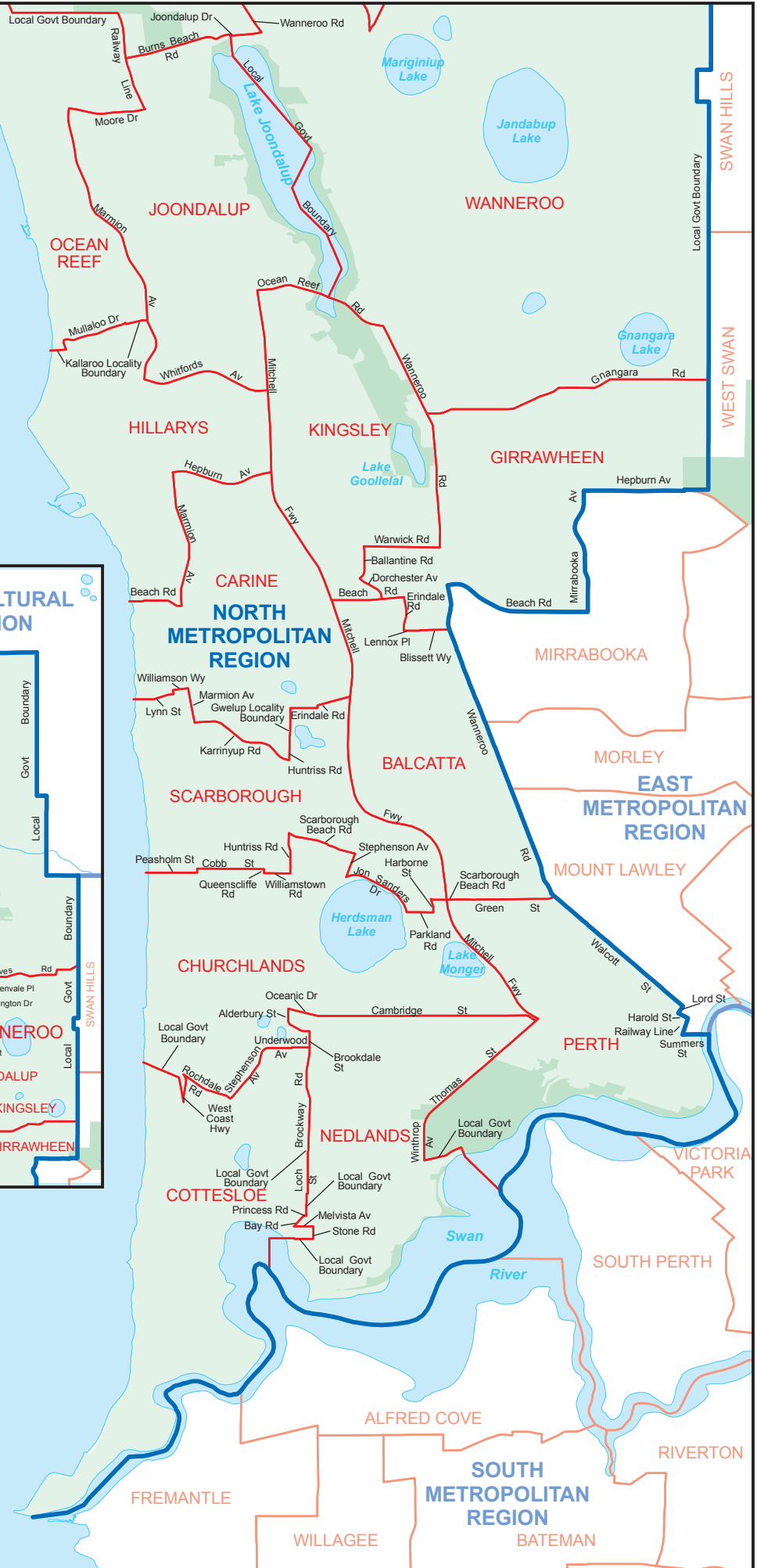
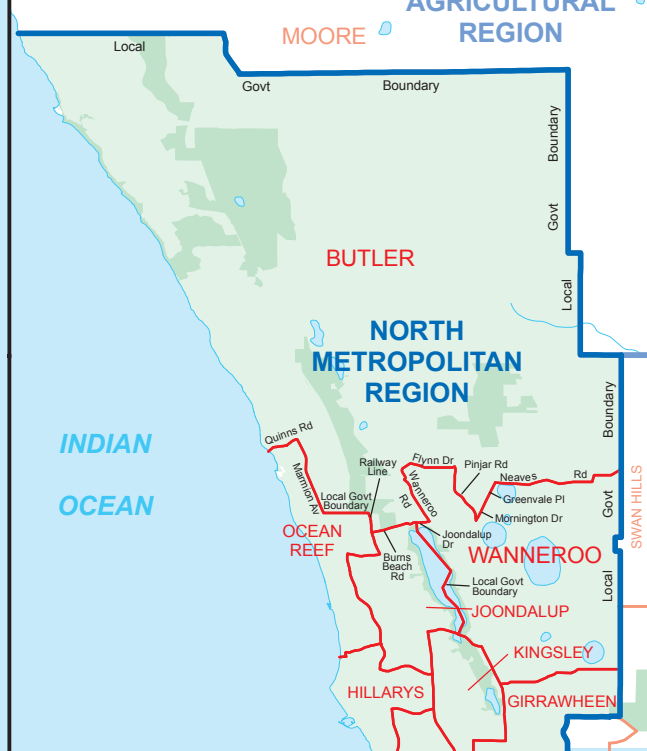
0 1 2 3 4 5
Kilometres



Landgate

© Western Australian Land Information Authority 2011

Butler extension



Districts in the metropolitan regions

South Metropolitan Region

(Note: for an explanation of terms, see 'The Final Boundaries – descriptions', p 9)

In the South Metropolitan Region there will be 14 districts, the same number as there is at present.

Alfred Cove

Gains: Bicton (remainder)

Loses: Palmyra (part)

Bateman

Gains: Alfred Cove (part), Kardinya (part), Melville (part), Murdoch (remainder) and Myaree (remainder)

Loses: Rossmoyne (remainder)

Cannington *No change*

Cockburn

Loses: Spearwood (part)

Fremantle

Gains: Palmyra (remainder)

Loses: Bicton (remainder)

Jandakot

Loses: Kardinya (part), Murdoch (remainder)

Kwinana

Gains: Baldivis (part)

Loses: Cooloongup (part) and Hillman

Riverton

Gains: Rossmoyne (remainder)

Rockingham

Gains: Cooloongup (part) and Hillman

South Perth *No change*

Southern River

Gains: Huntingdale (part – from the East Metropolitan Region)

Loses: Gosnells (part) and Thornlie (part) (both to the East Metropolitan Region)

Victoria Park *No change*

Warnbro

Loses: Baldivis (part)

Willagee

Gains: Spearwood (part)

Loses: Alfred Cove (part), Melville (part), Myaree (remainder) and Palmyra (part)

This outcome differs from the 10 June 2011 proposals in relation to the positioning of the district of Mandurah and the consequent changes to the districts of Warnbro, Rockingham and Kwinana, and a modest change between the localities of North Coogee and Coogee to describe boundaries more easily.

Elector statistics for districts in the South Metropolitan Region

District	Elector Enrolment 6/9/10	Deviation from 2010 Average District Enrolment
Alfred Cove	23,618	1.90%
Bateman	23,037	-0.61%
Cannington	23,262	0.36%
Cockburn	23,965	3.40%
Fremantle	24,992	7.83%
Jandakot	24,125	4.09%
Kwinana	25,012	7.91%
Riverton	24,493	5.67%
Rockingham	25,054	8.09%
South Perth	23,747	2.45%
Southern River	24,328	4.96%
Victoria Park	24,259	4.66%
Warnbro	25,170	8.59%
Willagee	23,765	2.53%
Total	338,827	



Office of the
ELECTORAL DISTRIBUTION COMMISSIONERS

2011 Electoral
Boundaries

ELECTORAL DISTRICTS FOR SOUTH METROPOLITAN REGION

WESTERN AUSTRALIA

Determined on 10 October 2011

REGION Electoral Region Boundary

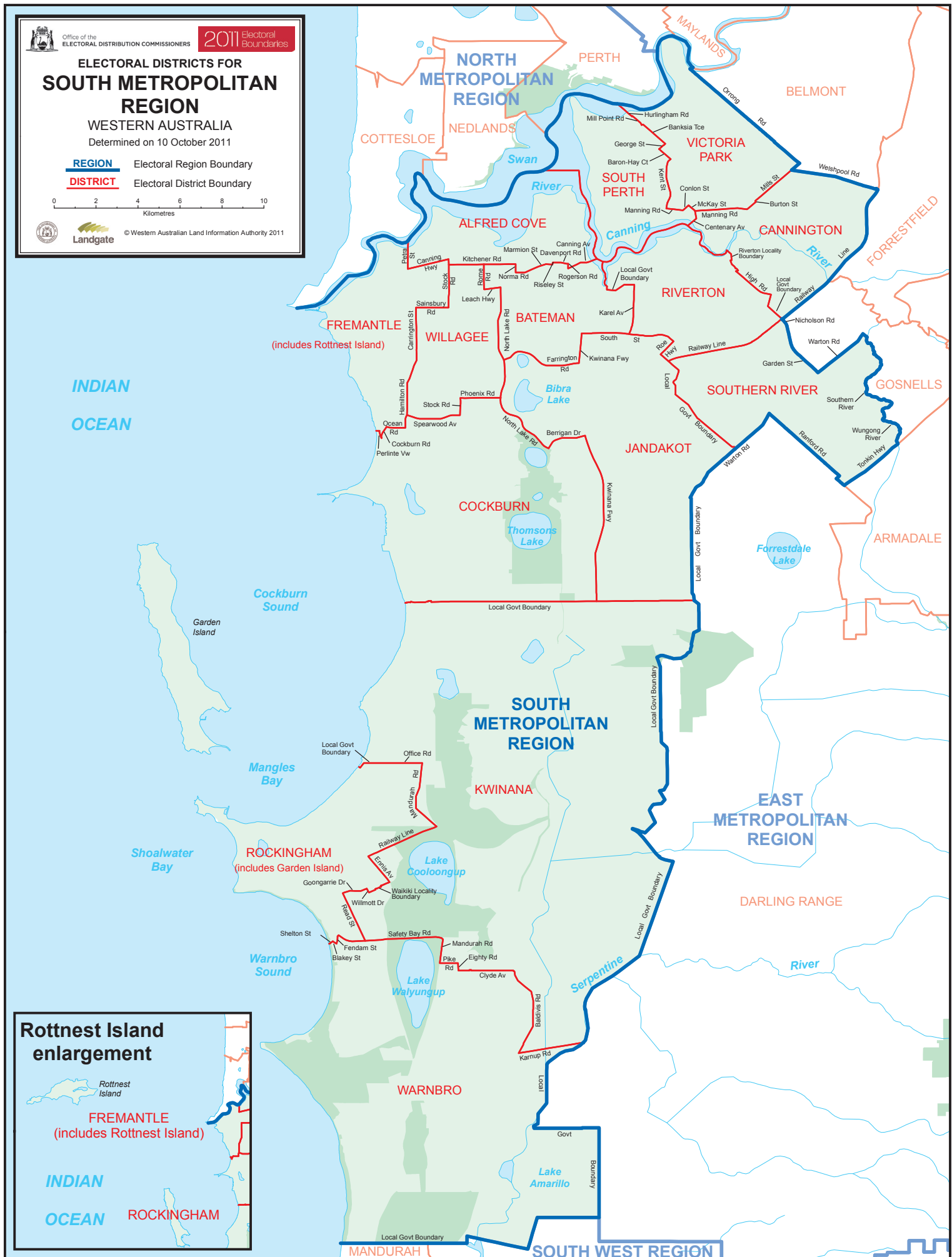
DISTRICT Electoral District Boundary

0 2 4 6 8 10
Kilometres



Landgate

© Western Australian Land Information Authority 2011



Rottnest Island enlargement



FREMANTLE
(includes Rottnest Island)

INDIAN

OCEAN

ROCKINGHAM