

DISTRICTS IN THE METROPOLITAN REGIONS

EAST METROPOLITAN REGION DISTRICTS

The changes to the existing boundary between the North Metropolitan Region and the South Metropolitan Region, combined with a lower district enrolment, have had a flow-on effect to all district boundaries within the East Metropolitan Region. This has resulted in another four districts being included in the region, bringing the total number of districts to 14.

Districts based on the regional centres of Midland and Armadale have been retained. The northern boundary of the Darling Range district has been adjusted around the Great Eastern Highway to keep local communities together as much as possible. Boundaries of other districts have also been created to achieve a balance between the range of matters that the Commissioners are required to consider, including community of interest and average district enrolment. In seeking to achieve this balance across the region, some difficult decisions had to be made when considering the inclusion of communities within particular districts. In some cases a new name has been determined to better reflect the composition of the district.

Following the objection phase, amendments were made to include central Kelmscott and the remaining portion of the locality of Brookdale in the Armadale district. To offset the shift in electors, parts of Wungong and Mount Richon were included in the Darling Range district. These adjustments seek to address community of interest concerns by incorporating the Kelmscott Town Centre and the whole of the proposed Wungong Urban Water area in the one district.

One submission drew attention to an oversight in the proposed boundaries, which resulted in the Gosnells Town Centre being excluded from the Gosnells district. Accordingly, the boundaries between the Gosnells and Kalamunda districts have been amended. Further adjustments have also been made to the Forrestfield district to allow the northern boundary of the Gosnells district to follow the Canning River.

The Commissioners were persuaded by submissions to accommodate the entire localities of Gooseberry Hill and Darlington in the Kalamunda district. To offset the shift of electors from Darlington, the entire locality of Guildford was returned to the Midland district (from the proposed Belmont district). There was no obvious group of electors that could be added to the Belmont district to improve representation, without significant change throughout the region. The elector enrolment for the district of Belmont therefore falls below the average district enrolment.

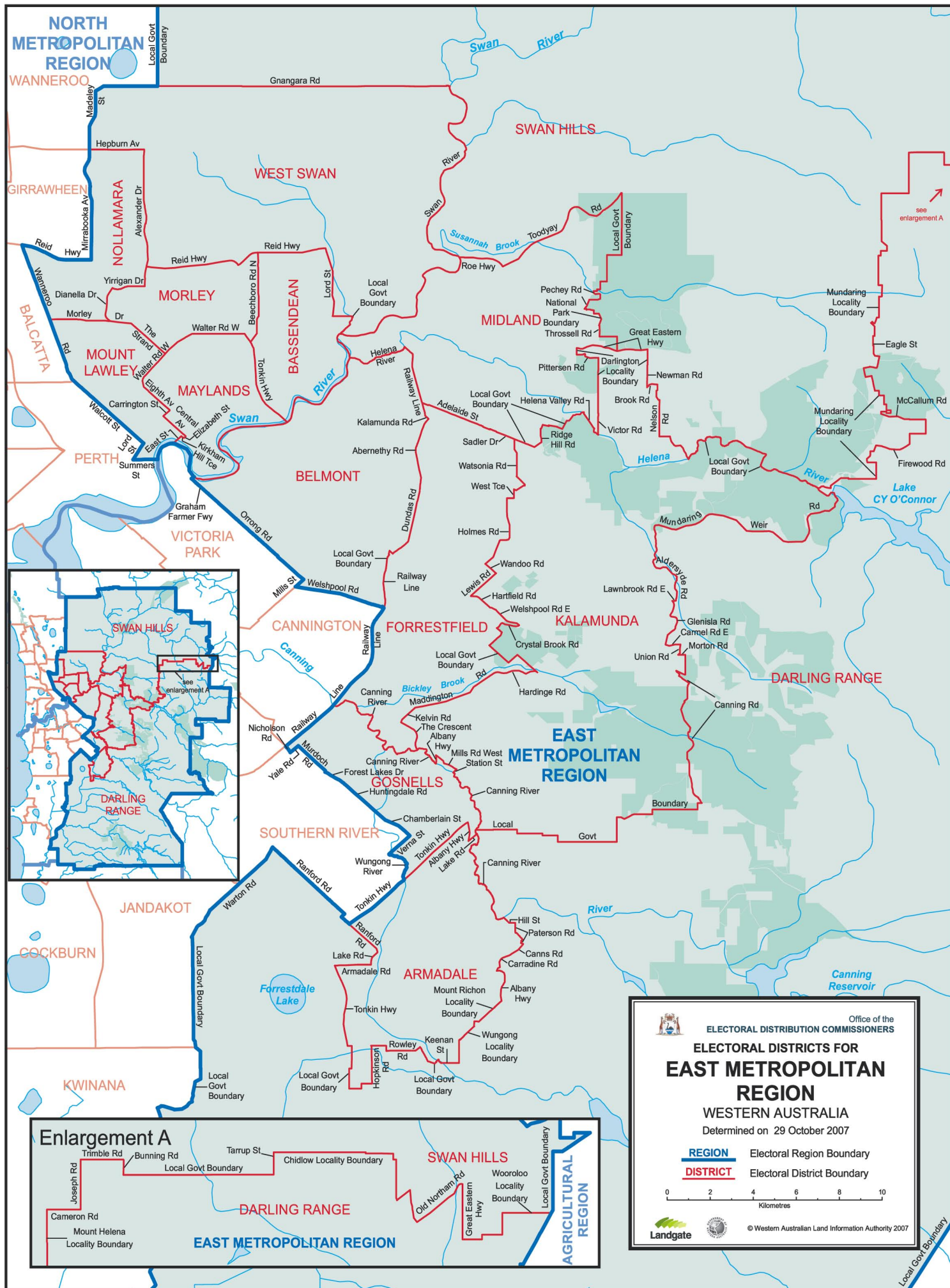
The objections also resulted in the inclusion of the entire localities of Mundaring, Glen Forrest and Mahogany Creek in the Swan Hills district. To offset the shift in electors, amendments were made to include the entire suburbs of Mount Helena, Chidlow and The Lakes in the Darling Range district.

Finally, the entire locality of North Perth was incorporated in the Perth district by moving the boundary between the Perth and Mount Lawley districts from Charles Street to Walcott Street.

Elector Statistics for the East Metropolitan Region Districts

District	Elector Enrolment 26/2/07	Deviation from 2007 Average District Enrolment (%)
Armadale	23,071	8.06
Bassendean	22,390	4.87
Belmont	20,912	-2.05
Darling Range	22,668	6.17
Forrestfield	22,754	6.58
Gosnells	21,918	2.66
Kalamunda	22,992	7.69
Maylands	22,195	3.96
Midland	22,432	5.07
Morley	22,818	6.88
Mount Lawley	22,020	3.14
Nollamara	22,124	3.63
Swan Hills	22,008	3.08
West Swan	21,076	-1.28
Total	311,378	

Note: District names for this region have not changed from those proposed in June 2007.



Office of the
ELECTORAL DISTRIBUTION COMMISSIONERS

**ELECTORAL DISTRICTS FOR
EAST METROPOLITAN
REGION**

WESTERN AUSTRALIA
Determined on 29 October 2007

REGION Electoral Region Boundary
DISTRICT Electoral District Boundary

0 2 4 6 8 10
Kilometres

Landgate

© Western Australian Land Information Authority 2007

DISTRICTS IN THE METROPOLITAN REGIONS

NORTH METROPOLITAN REGION DISTRICTS

The Commissioners confirmed their view (expressed in the proposed boundaries publication) that continued population growth and residential development in the City of Perth have highlighted the similarities between East Perth, West Perth, Northbridge and the central city – particularly in regard to mixed residential and commercial land use. Prompted by the need to reduce the Nedlands district (and other districts in the region) by about 6,000 electors, the Commissioners formed the view that West Perth and Kings Park are now more appropriately placed with the remainder of the City of Perth in a single district. However, the location of the Mitchell Freeway remains a significant factor in dividing other districts in the eastern and western parts of the North Metropolitan Region.

Wanneroo Road is also recognised as a significant dividing boundary between communities in the North Metropolitan Region. Where possible this was also used as a district boundary. The road could not be followed for its full length because elector numbers only allowed for the creation of three complete districts between the Mitchell Freeway and Wanneroo Road south of Joondalup. This resulted in the Girrawheen district spanning Wanneroo Road to take in Warwick and part of Hamersley. The south-west portion of Hamersley has been included in the Balcatta district. This division was deemed necessary having regard to the boundaries of neighbouring districts.

While the North Metropolitan Region retains 14 districts, each district is approximately 6,000 electors smaller in size. This substantial reduction in the average district enrolment in the metropolitan area has led to significant changes to district boundaries, particularly those adjacent to the East Metropolitan Region boundary. Where the boundary with the East Metropolitan Region has been adjusted, major roads have generally been followed.

The north of the region is still experiencing stronger growth than areas further to the south. To accommodate this growth, elector numbers in the northern districts have generally been set lower than those in more demographically stable areas closer to the Swan River.

Following the objection phase, relatively minor amendments were made to the boundary between the Churchlands and Cottesloe districts to follow roads, rather than the local government boundary, around the locality of Mount Claremont. Additionally, the boundary between the Perth and Mount Lawley districts was amended to follow Walcott Street so as to incorporate the entire locality of North Perth in the Perth district.

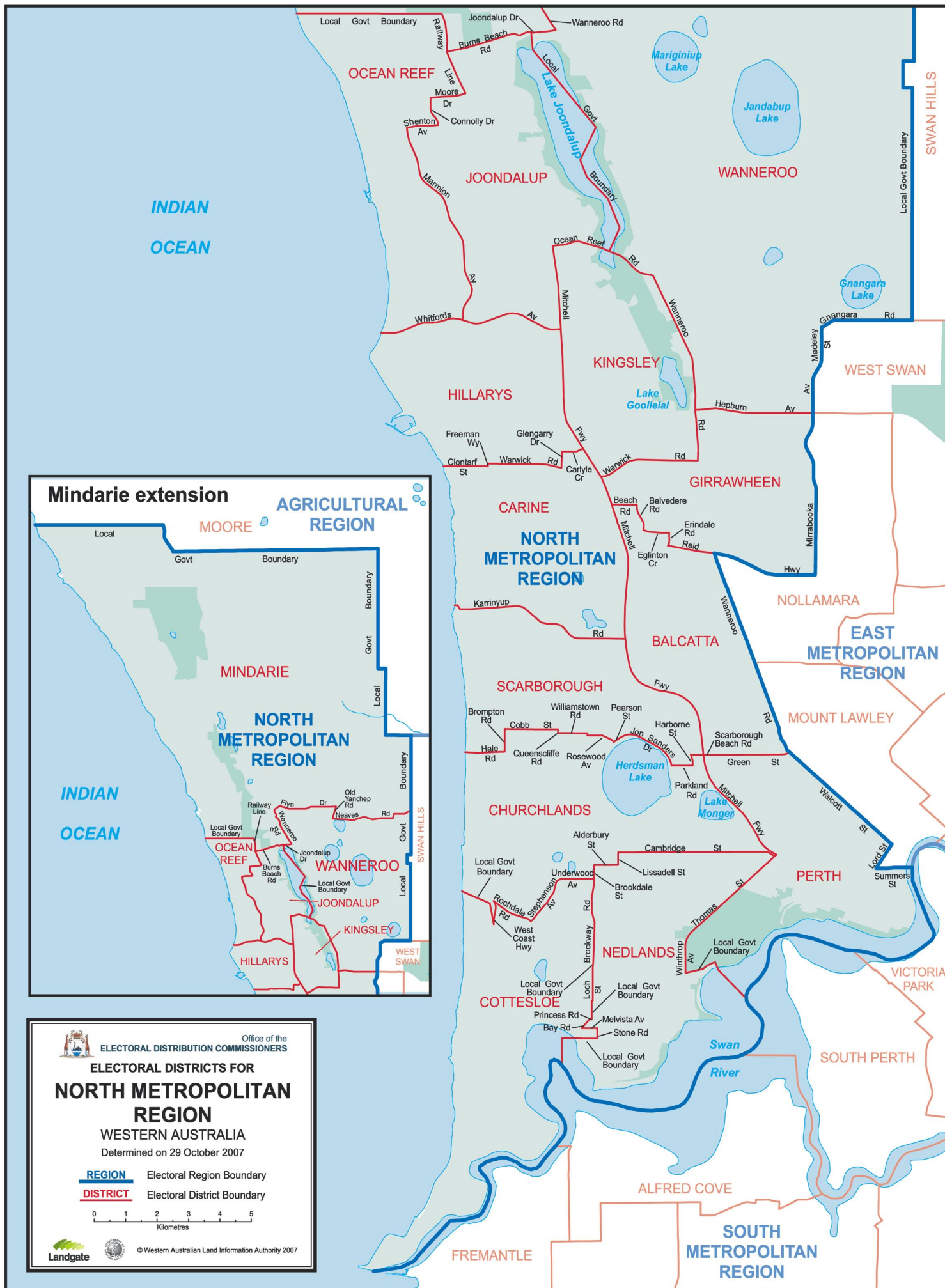
A number of late submissions, including a petition with 109 signatures, expressed concern about the boundary dividing the suburb of Woodlands between the proposed Churchlands and Scarborough districts. Having regard to the requirements of the legislation, the Commissioners formed the view that wider community of interest concerns in the area would be more adversely affected by adjusting the boundary. Consequently, no change was made to this boundary.

In the localities of Currabine, Hamersley and Duncraig, the boundaries generally follow significant local roads to achieve a necessary balance between community of interest and elector numbers. Some new names have been determined for districts where these more accurately reflect the area defined by the district.

Elector Statistics for the North Metropolitan Region Districts

	Elector Enrolment 26/2/07	Deviation from 2007 Average District Enrolment (%)
Balcatta	22,223	4.09
Carine	22,595	5.83
Churchlands	22,589	5.80
Cottesloe	23,143	8.40
Girrawheen	22,076	3.40
Hillarys	22,720	6.42
Joondalup	21,815	2.18
Kingsley	22,905	7.28
Mindarie	20,267	-5.07
Nedlands	22,860	7.07
Ocean Reef	21,936	2.74
Perth	22,514	5.45
Scarborough	22,292	4.41
Wanneroo	22,643	6.06
Total	312,578	

Note: District names for this region have not changed from those proposed in June 2007.



DISTRICTS IN THE METROPOLITAN REGIONS

SOUTH METROPOLITAN REGION DISTRICTS

At the southern end of the South Metropolitan Region, the local government boundaries have been recognised as being more relevant to the division of districts than the boundary provided by the Kwinana Freeway. The local government boundaries in this part of the region therefore form part of the revised boundary with the East Metropolitan Region.

The South Metropolitan Region also contains 14 districts, two of which – South Perth and Victoria Park – are constrained by the Swan and Canning Rivers. The adjustments necessary in this area to ensure that elector numbers are within acceptable variations have pushed the region boundary with the East Metropolitan Region to the south and east.

The Peel Development Commission submitted that the current district of Peel, which sits outside the Peel Development Region, was not appropriately named. As foreshadowed in the proposed boundaries publication, the revised district of Peel has been renamed Warnbro. Other changes to boundaries in the South Metropolitan Region have required the determination of new and more appropriate names for some districts.

Following the objection phase, amendments were made to include the suburbs of Leeming and Riverton in the Jandakot and Riverton districts, respectively. This was enabled by amending the boundaries between the Riverton and Jandakot districts, and the Riverton and Cannington districts.

The Commissioners were persuaded by submissions to adjust the boundaries between the Fremantle and Cockburn districts to avoid splitting the Port Coogee development area. The Commissioners were also persuaded to expand the Rockingham district by moving part of the East Rockingham locality (including the Cee and See Caravan Park and Rockingham Holiday Village) from the proposed Kwinana district.

Thirty-five electors in Hamilton Hill were inadvertently allocated to Willagee rather than Fremantle in the publication of proposed boundaries on 29 June 2007. Updated figures in the table correct this minor error and reflect the final allocation.

Elector Statistics for the South Metropolitan Region Districts

District	Elector Enrolment 26/2/07	Deviation from 2007 Average District Enrolment (%)
Alfred Cove	22,827	6.92
Bateman	22,327	4.58
Cannington	22,102	3.52
Cockburn	22,550	5.62
Fremantle	22,715	6.39
Jandakot	22,435	5.08
Kwinana	21,271	-0.37
Riverton	21,989	2.99
Rockingham	21,983	2.96
South Perth	22,324	4.56
Southern River	22,234	4.14
Victoria Park	22,457	5.19
Warnbro	21,873	2.45
Willagee	22,496	5.37
Total	311,583	

Note: District names for this region have not changed from those proposed in June 2007.



Office of the
ELECTORAL DISTRIBUTION COMMISSIONERS

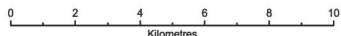
ELECTORAL DISTRICTS FOR SOUTH METROPOLITAN REGION

WESTERN AUSTRALIA

Determined on 29 October 2007

REGION Electoral Region Boundary

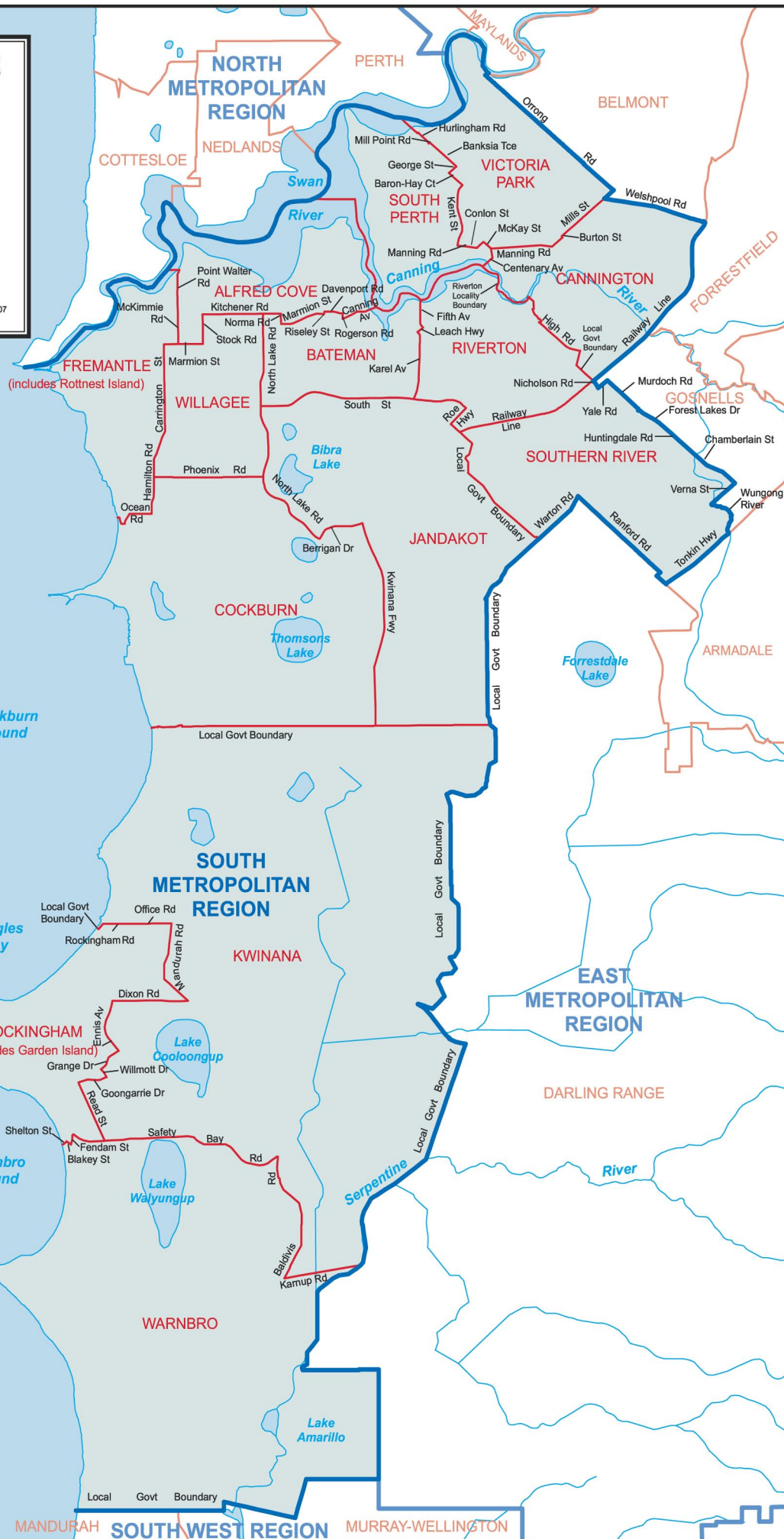
DISTRICT Electoral District Boundary



Landgate



© Western Australian Land Information Authority 2007



Rottnest Island enlargement



FREMANTLE
(includes Rottnest Island)

INDIAN

OCEAN

ROCKINGHAM